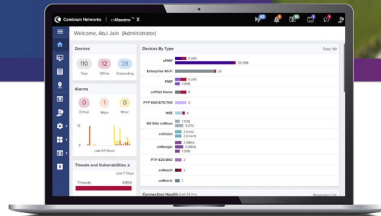


ePMP 6 GHz Force 4625 Series Subscriber Module

ePMP 4625 SM QUICK LOOK:

- High-performance subscriber modules for PTP and PMP fixed wireless broadband applications
- High-capacity leveraging 160 MHz channels
- Interoperates in PMP applications with ePMP 4600 APs
- 3-year hardware warranty



Service providers face ever-increasing demand for capacity in a limited amount of spectrum. Cambium Networks ePMP™ Force 4625 Subscriber Modules (SM) meets this demand offering high performance and low latency across both point-to-multipoint (PMP) and point-to-point (PTP) deployments.

The Force 4625 SM is offered with a 25 dBi integrated dish antenna.

Both Models Include the Following:

- High capacity and latencies less than 5 ms when using ePTP technology.
- Interoperability with ePMP 4600 Series Access Points (AP).
- Provides high-capacity in PTP and PMP applications, meeting the requirements of enterprise, industrial, government, and service provider users.
- Managed by Cambium Networks cnMaestro™ Network Management System for easy provisioning, monitoring, and upgrades.
- Network planning with LINKPlanner and cnHeat.
- Cambium Networks' 3-year hardware warranty and support.
- Includes a Power over Ethernet (PoE) injector and pole mount hardware.

Force 4625 Subscriber Module

Spectrum

| | |
|-----------------------------------|--|
| Channel Width MHz | 20 40 80 160 MHz |
| Proprietary Physical Layer | ePMP air interface with 2x2 MIMO/OFDMA |
| Channel Spacing | Configurable in 5 MHz increments |
| Frequency Range | Force 4625: 5925–7125 MHz ¹ |

¹ Allowable frequencies and bands are dictated by individual country regulations. Operation under AFC (Automatic Frequency Coordination) control in FCC and Canada jurisdictions.

| | |
|---|---|
| MAC Layer (Media Access Control) | Cambium proprietary |
| Ethernet Interface | 100/1000 BaseT, rate auto negotiated |
| Protocols Used | IPv4/IPV6 , UDP, TCP, IP, ICMP, SNMPv2c, HTTPs, STP, SSH, IGMP snooping |
| Network Management | HTTP/HTTPS, SNMPv1/2, SNMPv3, SSH |
| VLAN | 802.1Q with 802.1p priority |

Performance

| | |
|---|--|
| ARQ | Yes |
| Nominal Receive Sensitivity (w/FEC) @20 MHz Channel | MCS 0 = -92 dBm to MCS 11 (1024 QAM-5/6) = -61 dBm (per chain) |
| Nominal Receive Sensitivity (w/FEC) @40 MHz Channel | MCS 0 = -89 dBm to MCS 11 (1024 QAM-5/6) = -58 dBm (per chain) |
| Nominal Receive Sensitivity (w/FEC) @80 MHz Channel | MCS 0 = -86 dBm to MCS 11 (1024 QAM-5/6) = -55 dBm (per chain) |
| Nominal Receive Sensitivity (w/FEC) @160 MHz Channel | MCS 0 = -86 dBm to MCS 11 (1024 QAM-5/6) = -51 dBm (per chain) |
| Modulation Levels (Adaptive) | MCS 0 (BPSK) to MCS 11 (1024 QAM-5/6) |
| Geolocation | External USB GPS receiver |
| Transmit Power Range | +3 to +28 dBm (combined, to regional EIRP limit) (1 dB interval) |
| QoS (Quality of Service) | Three-level priority (voice, high, low) with packet classification by DSCP, COS, VLAN ID, IP & MAC address, broadcast, multicast, and station priority |

Physical

| | |
|--|--|
| Surge Suppression | 1 Joule Integrated |
| Environmental | IP55 |
| Temperature | -30°C to 55°C (-22°F to 131°F) |
| Weight | 2.76 kg (6.1 lb) |
| Dimensions (Dia x Depth) | 472 x 472 x 296 mm (18.5 x 18.5 x 11.7 in) |
| Pole Diameter Range | Center: 3.1 to 7.6 cm (1.25 to 3.0 in) |
| Power Consumption | 13W (up to 15W in extreme cold temperatures when heater is activated) |
| Input Voltage | 44V–59V |
| Antenna | 25 dBi Integrated Dish |
| GPS Antenna Connection (Optional) | Optional USB connection for an external USB GPS receiver (some regions require geolocation and should choose the model supporting GPS); regions that do not require geolocation have the no-GPS option, which removes that port (see part descriptions below for details) External GPS Receiver must be ordered separately: Part # N000940L001A |

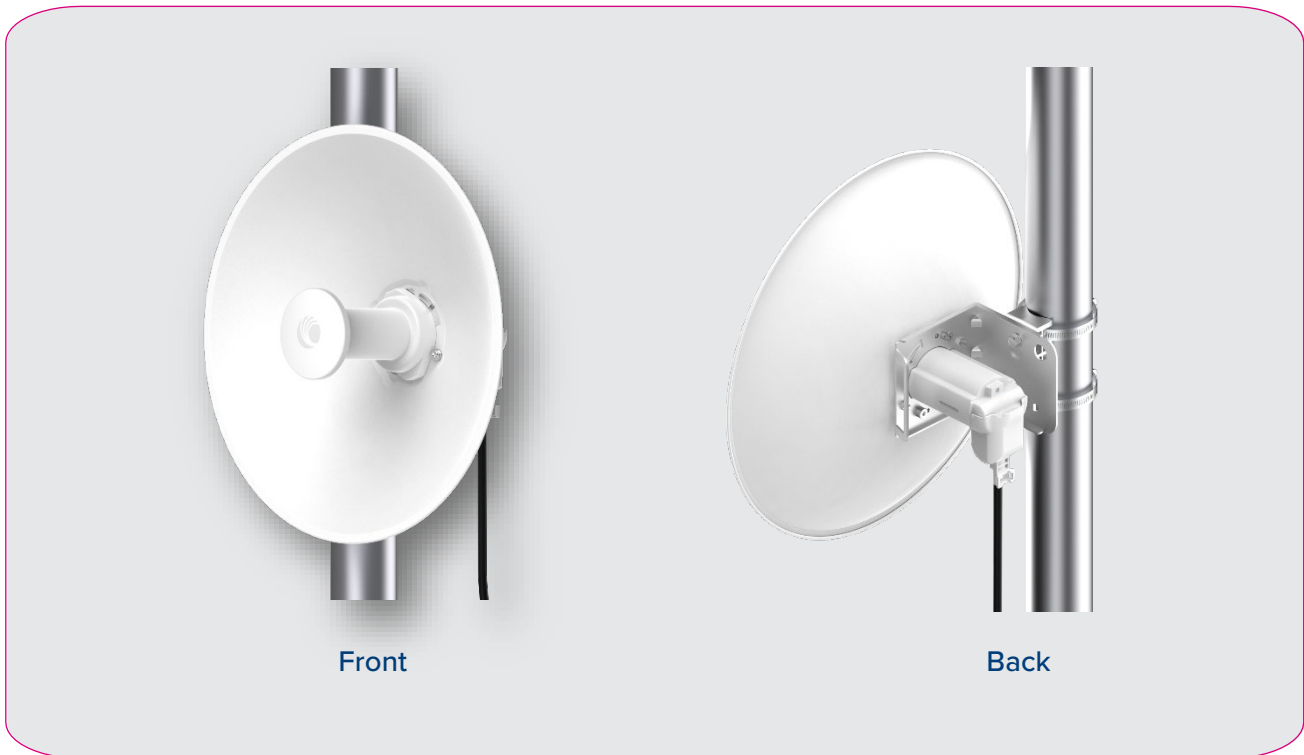
Force 4625 Subscriber Module

Security

| | |
|------------|--|
| Encryption | 128-bit AES (CCMP mode), 256-bit AES optional, where allowed |
|------------|--|

Certifications

| | |
|------------------------|---|
| FCCID | Z8H89FT0075 |
| FCC Regulatory Part # | C068940P142A |
| ETSI Regulatory Part # | C060940P041A |
| Industry Canada Cert | 109W-0075 |
| CE | Visit cambiumnetworks.com for declaration of conformity. |



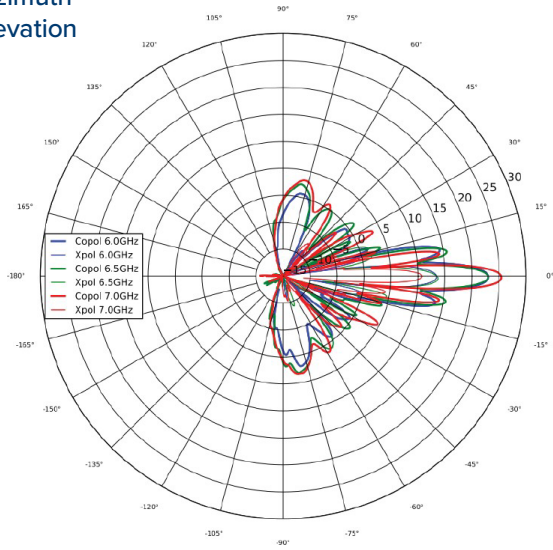
Front

Back

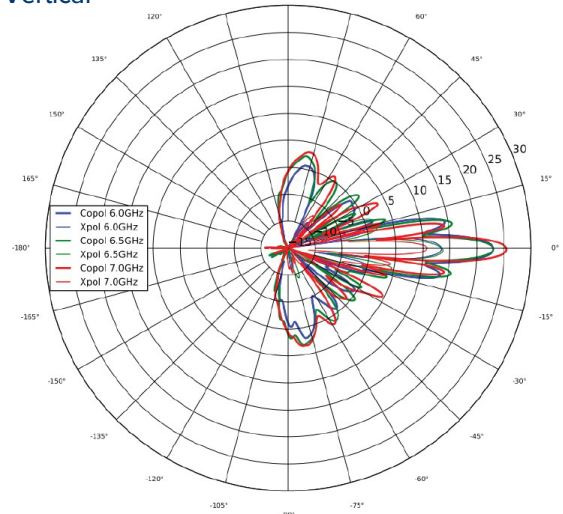
Force 4625 Subscriber Module

Force 4625 Antenna Patterns

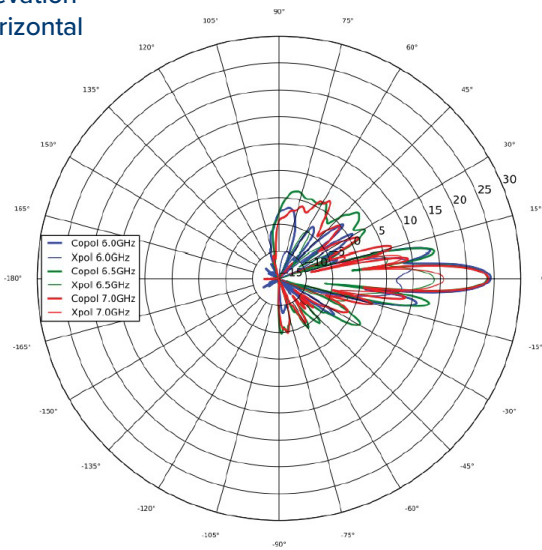
**Azimuth
Elevation**



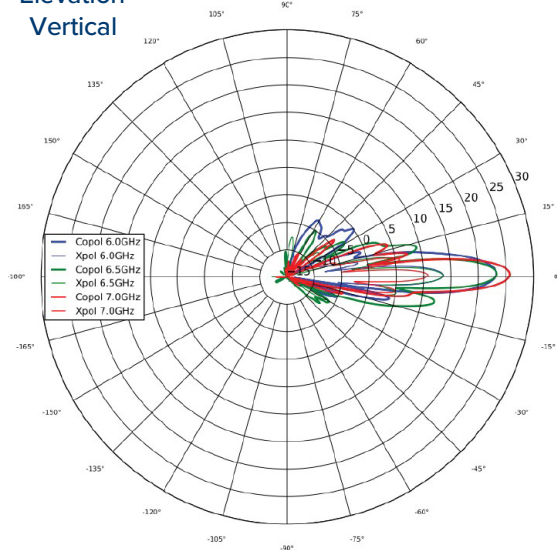
**Azimuth
Vertical**



**Elevation
Horizontal**



**Elevation
Vertical**



Force 4625 Subscriber Module

Ordering Information (models with GPS connection port); still requires external GPS receiver kit

| | |
|---------------------|--|
| C068940M142B | ePMP 6 GHz Force 4625 SM with GPS Port, 4-Pack packaging, priced per radio (FCC/IC) (US Cord) |
| C068940M141A | ePMP 6 GHz Force 4625 SM with GPS Port, 4-Pack packaging, priced per radio (ROW) (US cord) |
| C068940M941B | ePMP 6 GHz Force 4625 SM with GPS Port, 4-Pack packaging, priced per radio (ROW) (South Africa cord) |
| C068940M041B | ePMP 6 GHz Force 4625 SM with GPS Port, 4-Pack packaging, priced per radio (ROW) (no cord) |
| C068940M241B | ePMP 6 GHz Force 4625 SM with GPS Port, 4-Pack packaging, priced per radio (ROW) (EU cord) |
| N000940L001A | ePMP USB GPS Receiver and Antenna kit |

Ordering Information (models that do not have the GPS connection port)

| | |
|---------------------|---|
| C060940M041A | ePMP 6 GHz Force 4625 SM 4-Pack packaging, priced per radio (ROW) (no cord) |
| C060940M141A | ePMP 6 GHz Force 4625 SM 4-Pack packaging, priced per radio (ROW) (US cord) |
| C060940M241A | ePMP 6 GHz Force 4625 SM 4-Pack packaging, priced per radio (ROW) (EU cord) |
| C060940M243A | ePMP 6 GHz Force 4625 SM 4-Pack packaging, priced per radio (EU) (EU cord) |
| C060940M341A | ePMP 6 GHz Force 4625 SM 4-Pack packaging, priced per radio (ROW) (UK cord) |
| C060940M343A | ePMP 6 GHz Force 4625 SM 4-Pack packaging, priced per radio (EU) (UK cord) |
| C060940M441A | ePMP 6 GHz Force 4625 SM 4-Pack packaging, priced per radio (ROW) (India cord) |
| C060940M445A | ePMP 6 GHz Force 4625 SM 4-Pack packaging, priced per radio (India) (India Cord) |
| C060940M541A | ePMP 6 GHz Force 4625 SM 4-Pack packaging, priced per radio (ROW) (China cord) |
| C060940M641A | ePMP 6 GHz Force 4625 SM 4-Pack packaging, priced per radio (ROW) (Brazil cord) |
| C060940M741A | ePMP 6 GHz Force 4625 SM 4-Pack packaging, priced per radio (ROW) (Argentina cord) |
| C060940M841A | ePMP 6 GHz Force 4625 SM 4-Pack packaging, priced per radio (ROW) (ANZ cord) |
| C060940M941A | ePMP 6 GHz Force 4625 SM 4-Pack packaging, priced per radio (ROW) (South Africa cord) |
| C060940M246A | ePMP 6 GHz Force 4625 SM 4-Pack packaging, priced per radio (Indonesia) (EU Cord) |

ABOUT CAMBIUM NETWORKS

Cambium Networks enables service providers, enterprises, industrial organizations, and governments to deliver exceptional digital experiences and device connectivity with compelling economics. Our ONE Network platform simplifies management of Cambium Networks' wired and wireless broadband and network edge technologies. Our customers can focus more resources on managing their business rather than the network. We make connectivity that just works.

cambiumnetworks.com