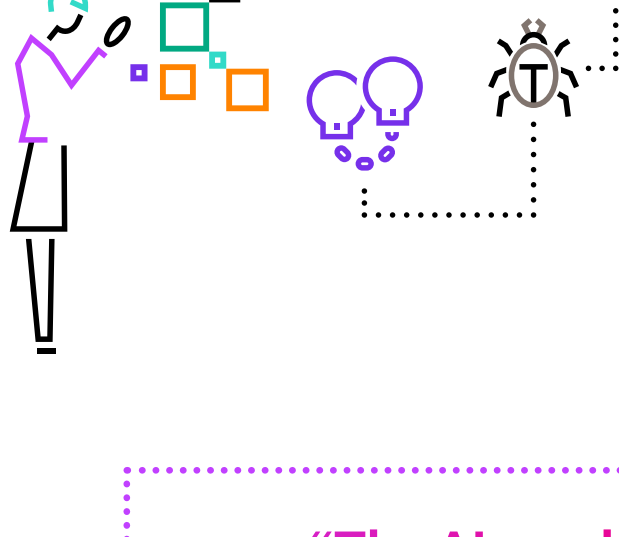


# Harnessing AI in networking

AI insights to enhance readiness

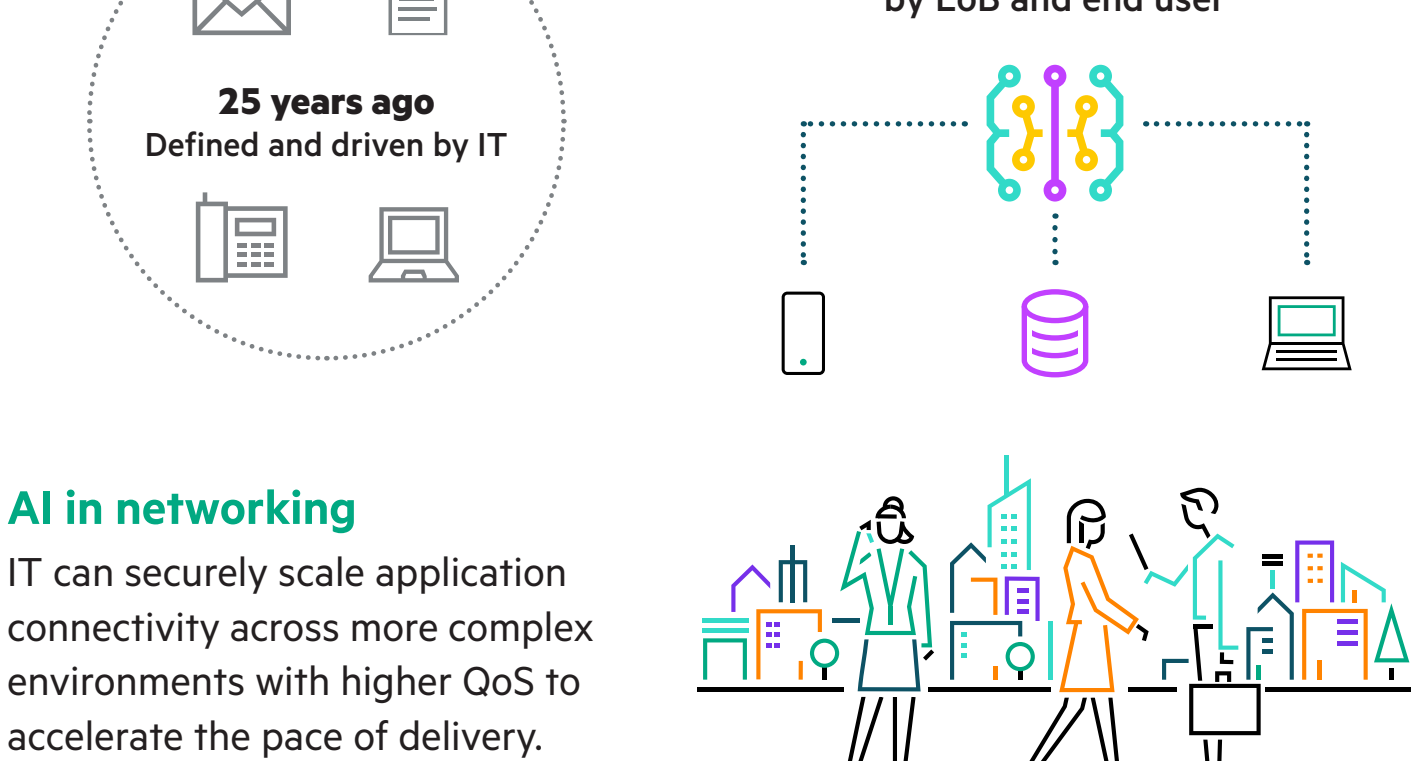


AI is poised to revolutionize enterprise networking. From emerging use cases to challenges and benefits, the following insights will help you understand what to expect and how to best prepare for the future.

“The AI revolution is going to spark customers to rethink their data strategy: where they store it and how they maintain it and how they ensure regulatory compliance.”

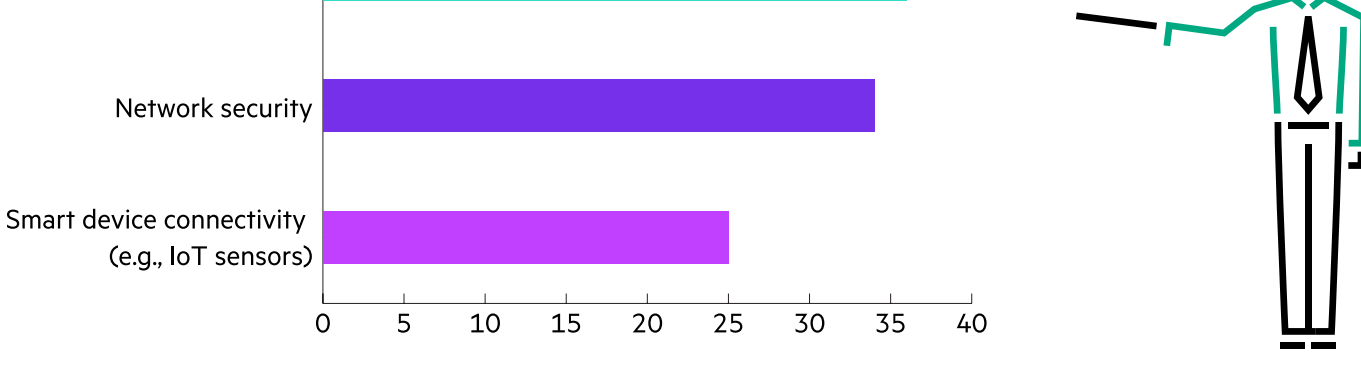
– Antonio Neri, CEO, HPE

## Why AI in networking



## How organizations want to invest in AI

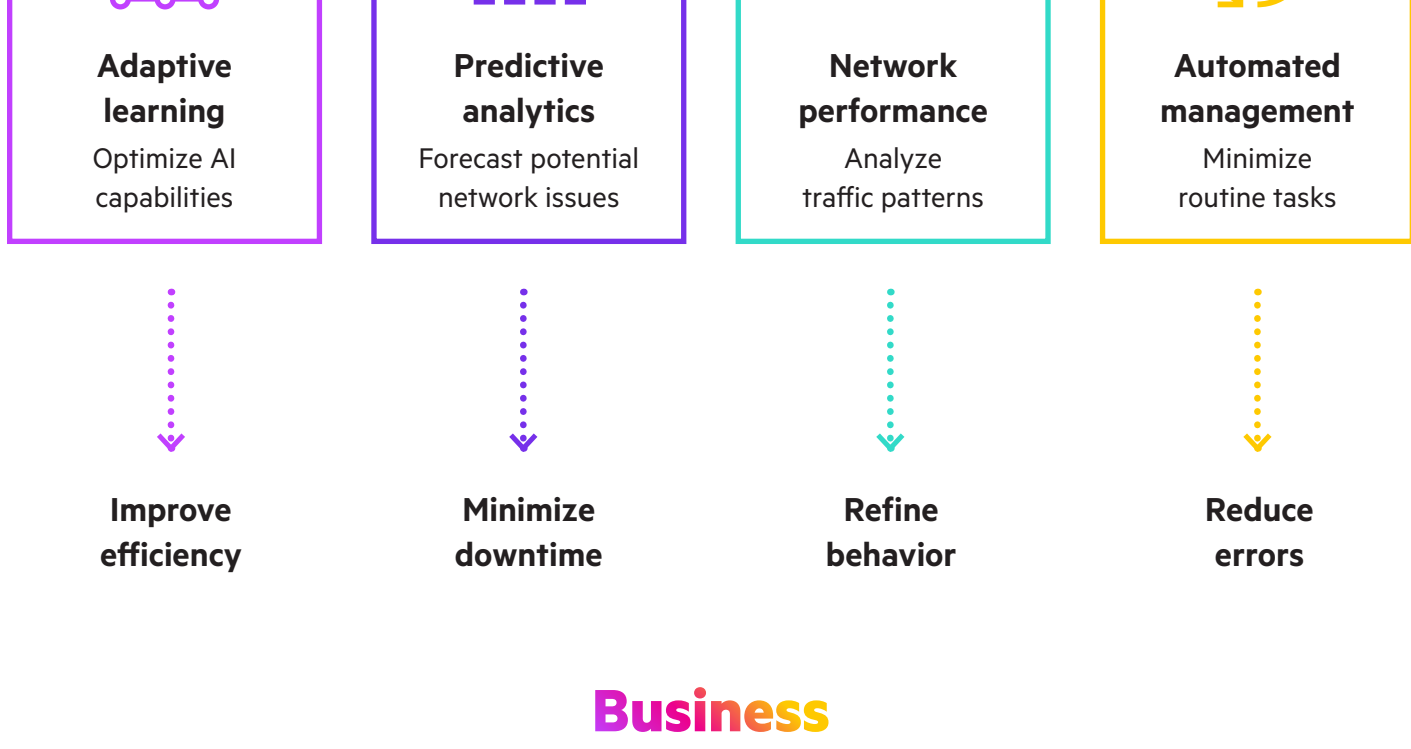
### Top AI capabilities powering the network



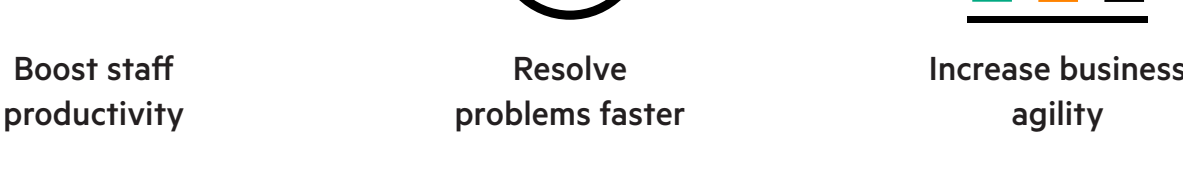
Source: Worldwide AI in Networking Special Report, IDC, 2024, N = 1209.

## Benefits of AI in networking

### Technical

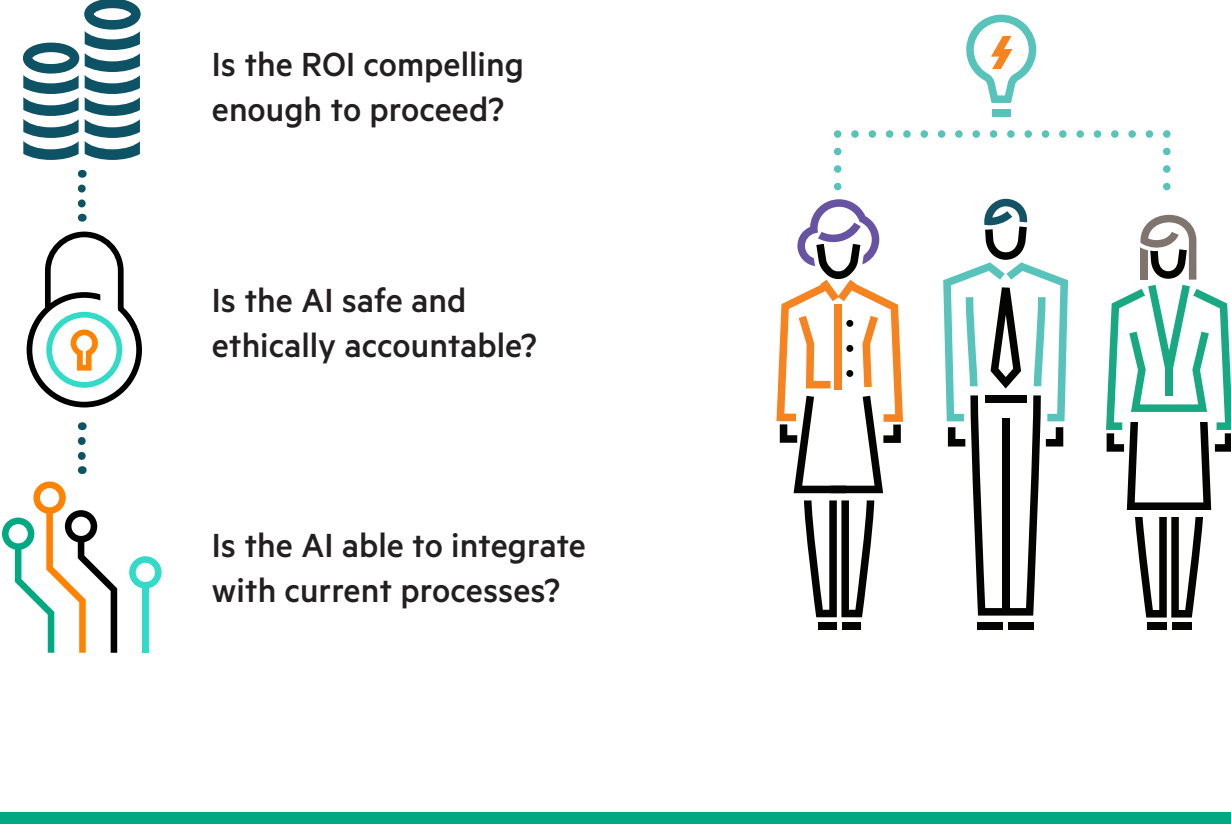


### Business

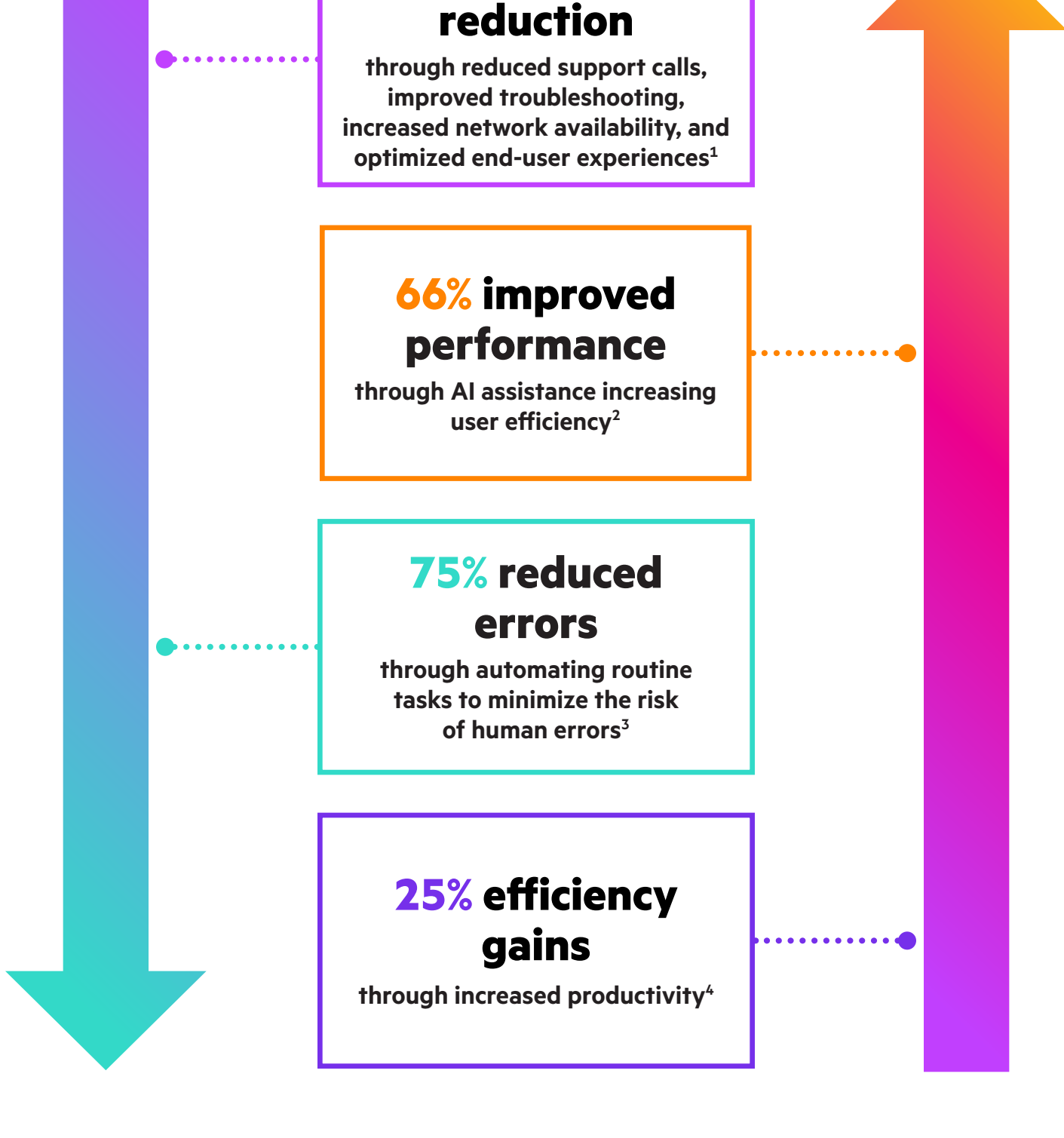


Source: Worldwide AI in Networking Special Report, IDC, 2024, N = 896.

## Challenges of deploying AI in networking

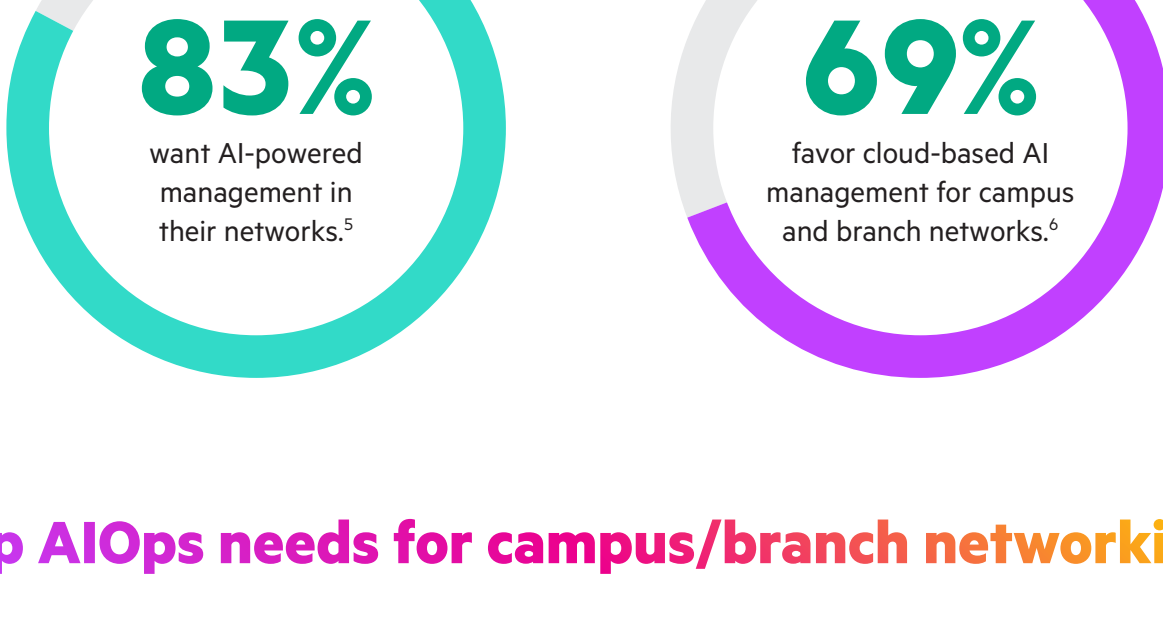


## Evaluating ROI in the context of AI

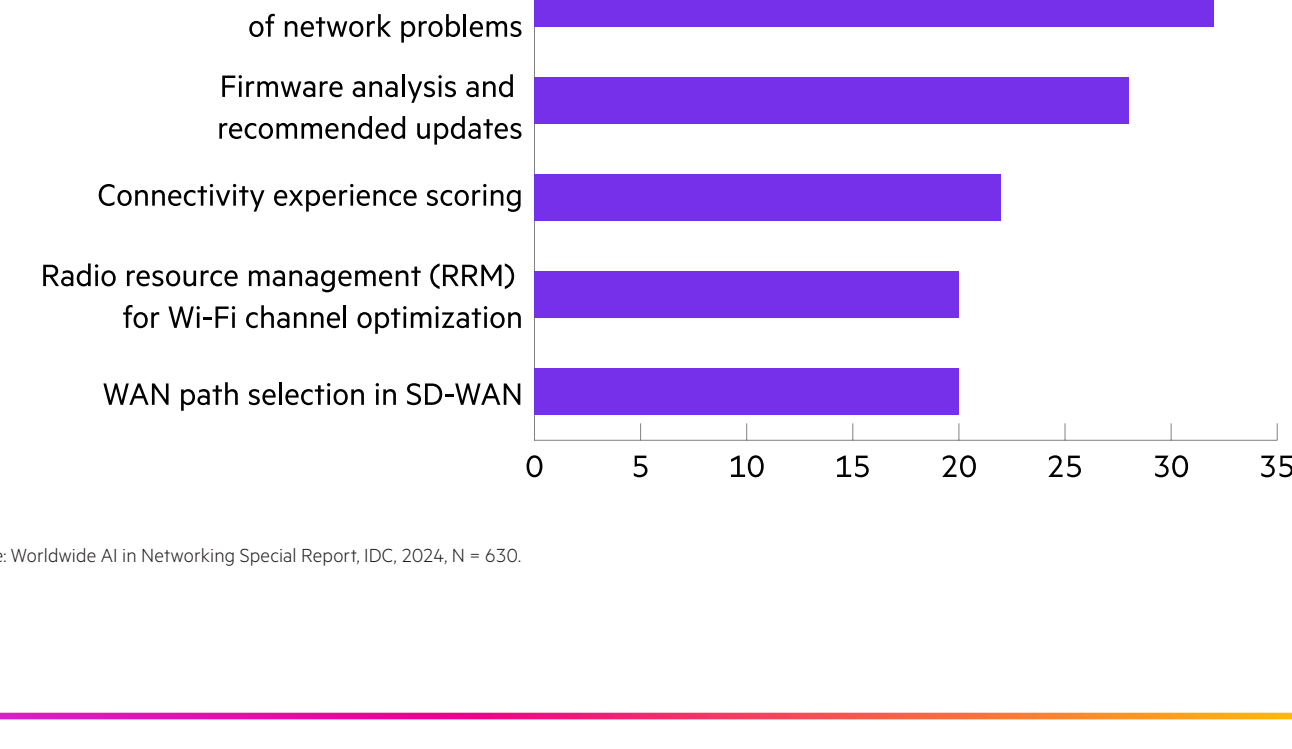


## Demand for AI in networking

### IT wants AI in networking



### Top AIOps needs for campus/branch networking



Source: Worldwide AI in Networking Special Report, IDC, 2024, N = 630.

**HPE Aruba Networking Central** helps supercharge your network through expanded AI functionality, upgraded security, and unrivaled connectivity across branch, remote office, campus, data center, and IoT networks. Optimize your network using a refreshed and intuitive user interface and start transforming your network today.

<sup>1</sup> "What is AI networking? Use cases, benefits and challenges," SDX Central, January 2025.

<sup>2</sup> "AI Improves Employee Productivity by 66%," NN Group, July 2023.

<sup>3</sup> "The key to reducing errors with AI: Technology acceptance," The Journal of Accountancy, February 2024.

<sup>4</sup> "AI is showing 'very positive' signs of eventually boosting GDP and productivity," Goldman Sachs, May 2024.

<sup>5</sup> "Worldwide AI in Networking Special Report," IDC, 2024, N = 1,209.

<sup>6</sup> "Worldwide AI in Networking Special Report," IDC, 2024, N = 630.

Learn more at:  
[HPE.com/aruba-central](https://hpe.com/aruba-central)

Visit [HPE.com](https://hpe.com)

Chat now (sales)