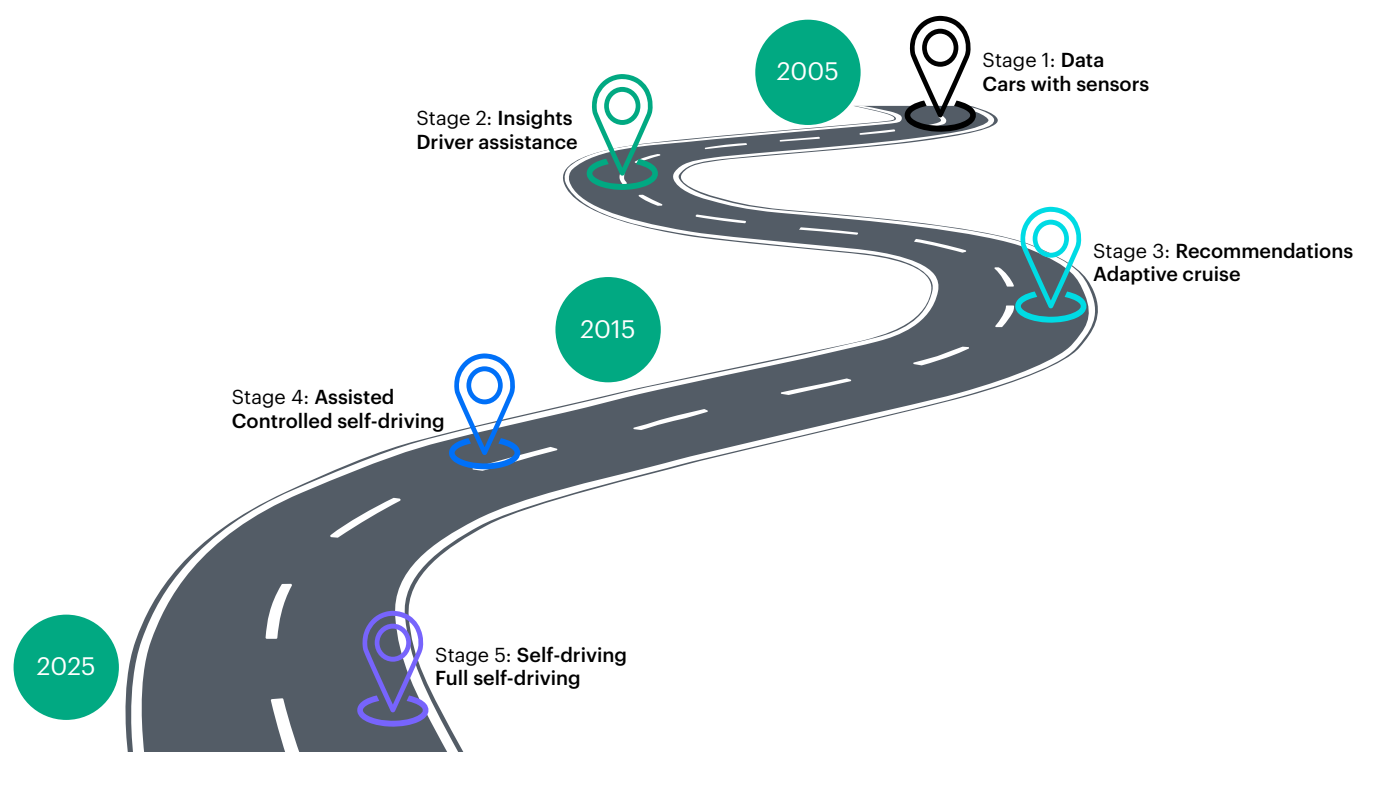




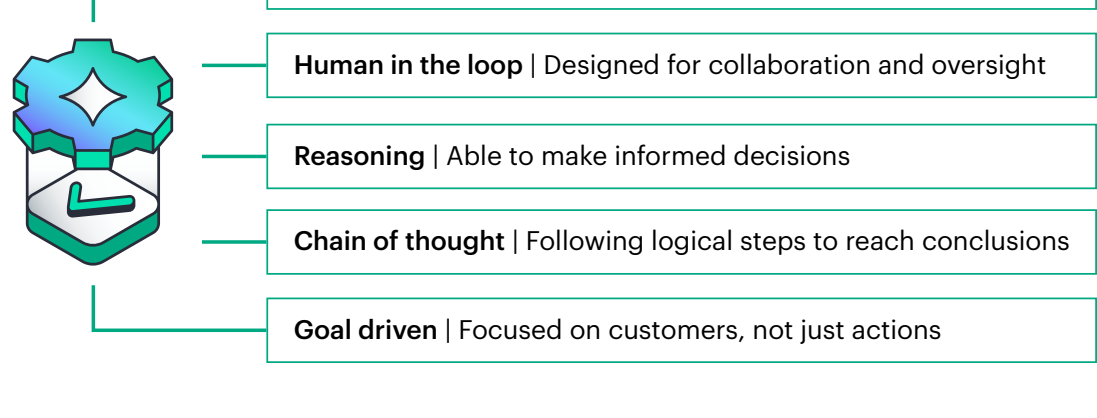
# AGENTIC AI IS THE NEW BACKBONE OF NETWORKING

## Our vision to the fully autonomous self-driving network

Today's networks are increasingly dynamic, complex, and resource intensive. To keep pace, organizations are investing in AI to gain efficiency and control.



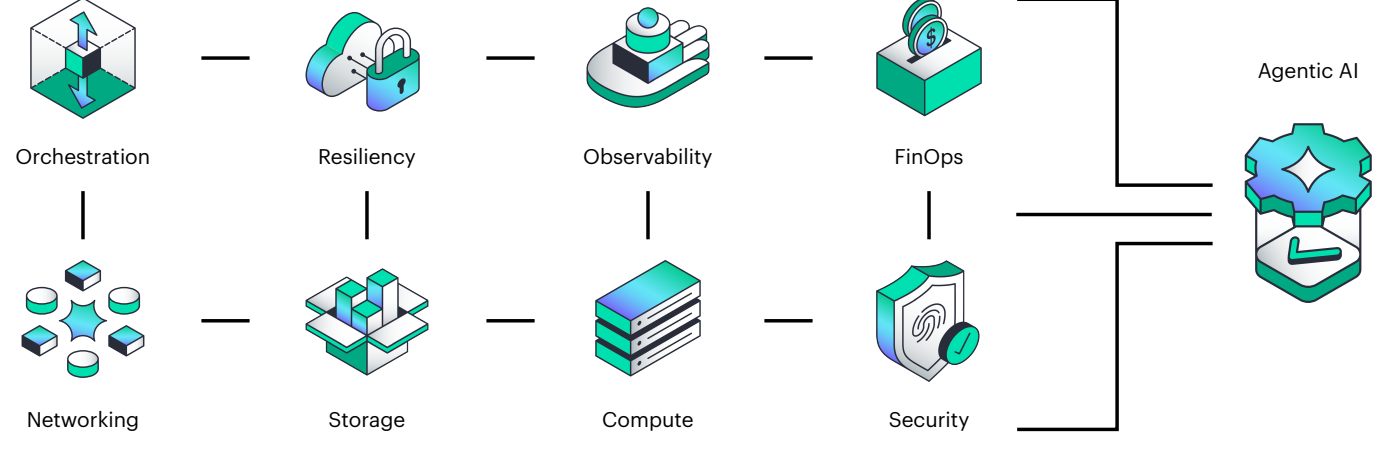
## Agentic AI: Understanding the core characteristics



## GreenLake Intelligence: The bigger picture

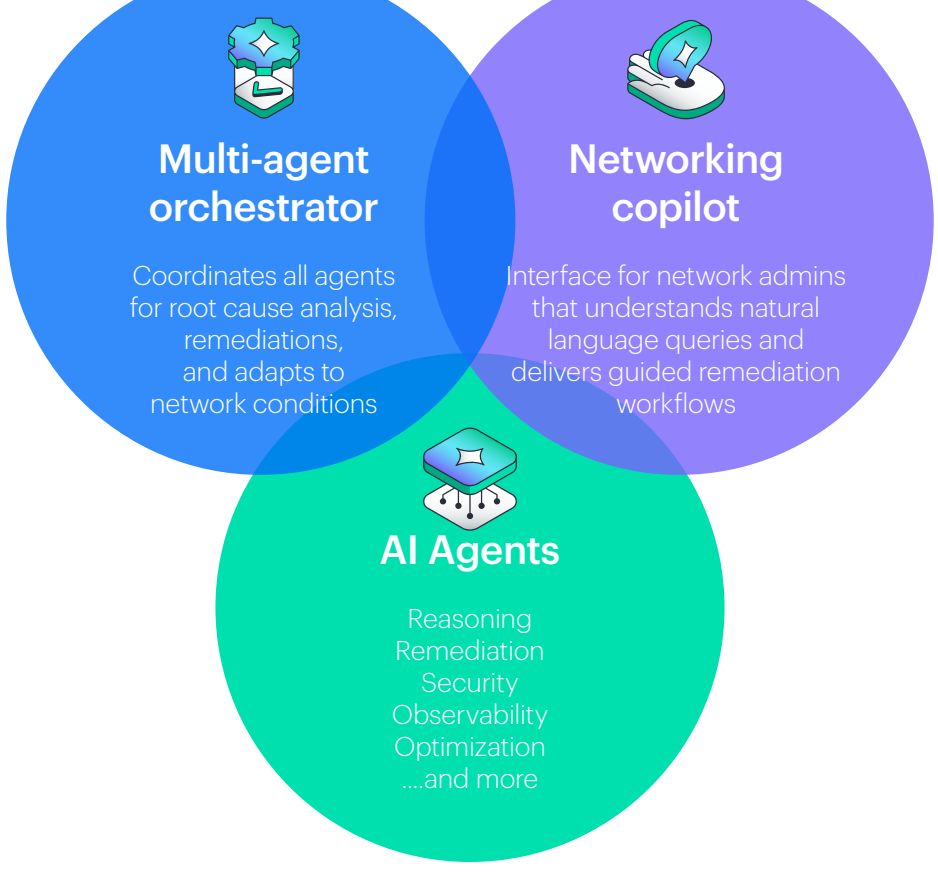
**Our self-driving technologies and agentic AI** are part of HPE's broader GreenLake Intelligence vision across the critical infrastructure IT stack.

**From compute to storage to networking**, every layer is infused with reasoning agents for unified, autonomous operations.



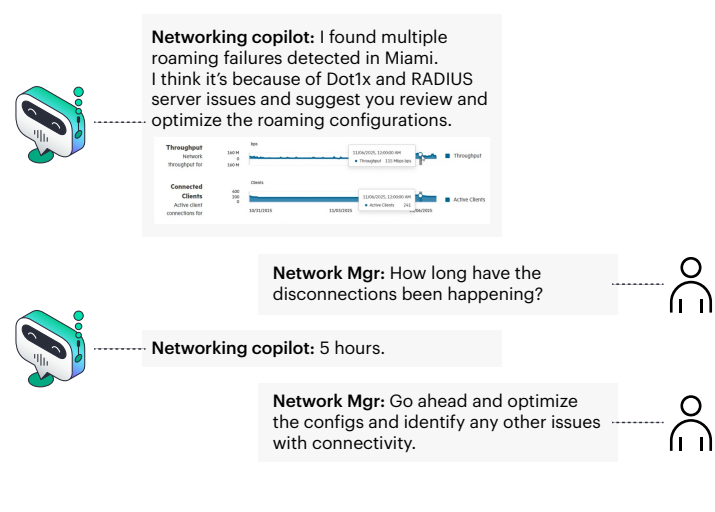
## Agentic Mesh: Your extended team of thinking agents

GreenLake Intelligence multi-agent orchestrator along with Networking copilot and 15+ domain AI agents act like a 24/7 intelligent operations team that can reason to solve problems across your network



## Meet GreenLake Copilot: Your conversational interface

GreenLake Copilot transforms troubleshooting into collaboration. IT teams interact via natural language to diagnose and resolve issues in real time, driven by powerful reasoning models context-tuned for networking.



Self-driving is now.  
The vision is real.  
Join the movement.

Learn more at

[HPE.com/Aruba-Central](https://HPE.com/Aruba-Central)

