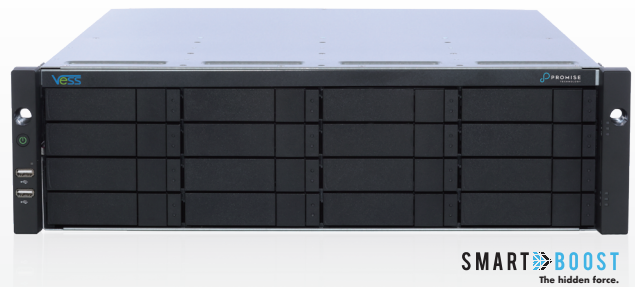




Data Sheet

# Vess A6000P Series



## Optimized for Video Surveillance

The Vess A6000P Series storage appliance is specially engineered for IP video surveillance deployment of medium to large scale; ideally suited for surveillance systems in banks, malls, casinos, factories, warehouses, commercial, residential, governmental or private enterprises. The subsystems are capable of continuous recording and playback operation without dropping frames.

## Highlights

- | **Optimized for Surveillance**  
Storage appliance optimized for IP video surveillance.
- | **Midsize to Large-Scale Solutions**  
Ideal for more than a hundred full-HD IP cameras, perfect for banking, retail, gaming, manufacturing, and more.
- | **Cost Effective & Scalable**  
Integrated solution results in less management overhead; it's easy to expand storage capacity using iSCSI connection to PROMISE Vess R/J storage hardware systems for massive storage capacity.
- | **Extensive VMS Support**  
Certified/tested with the world's leading video management software.
- | **Easy to Administer & Maintain**  
Hot swappable drive bays, redundant power supplies, & One Plug Auto Service (OPAS) ensure Vess is incredibly easy to administer and maintain.
- | **PROMISE SmartBoost™**  
For robust, error free performance in video recording applications.

## Technical Specifications

### Model Vess A6600P Vess A6800P

#### General Information

Camera Range <sup>1</sup>	170	200
Form Factor	3U, 19" Rackmount	4U, 19" Rackmount
Number Of Drives	16 Drives	24 Drives
Drive Type	Hot Swappable 3.5" Enterprise SATA HDD 6Gbs. Optional 2.5" Enterprise SATA SSD	
Internal Storage	M.2 PCIe NVMe SSD 256GB (Standard) or M.2 256GBx2 OS RAID (Optional)	
System Processor	Intel® Xeon E series	
System Memory	2 x 16GB DDR4 Default (Max 128GB)	
Storage Expansion	Optional PROMISE Vess R and Vess J series via iSCSI	

#### Interfaces

NIC Port	2 x Gigabit Ethernet (Optional accessory: Dual port 10Gbps SFP+ NIC)	
USB Port	Front: 2 x USB2.0, Back: 4 x USB3.0	
PCI Express Ports	1 x PCIe3.0 x8 / 1 x PCIe3.0 x4 (available only when OS RAID card is not present)	
Graphic Interface	1 x D-sub VGA, 1 x Display Port, 1 x HDMI*	
Audio I/O	3 x 3.5mm Audio Jack	
Graphic Card Support <sup>2</sup>	Supports Nvidia Pascal, Turing, Ampere, Ada Lovelace and Hopper Arch. GPUs	
	1 x 200mm (L) * 111mm(H) * single slot	1 x 200mm (L) * 155mm(H) * single slot

#### RAID Operational Feature

RAID Levels	0, 1, 1E, 3, 5, 6, 10 (0+1), 30, 50, 60 (Any combination can be configured simultaneously)
Hot Spares	Multiple global or dedicated hot-spare drives with revertible option

#### Software

OS Supported (64-bit)	Windows 10, Windows11, Windows Server 2019, Windows Server 2022
Management Tools	Graphical UI/SNMP via Ethernet, CLI via Ethernet or Graphics, OPAS Service via USB, SDK or API for Integration
Optimization Technologies	SMARTBOOST(TM) Storage for Video Surveillance optimization
Event Notification	Email, SNMP (V1/V2/V3), Buzzer, LEDs

#### System Information

AC Input	100 ~ 240 VAC, 60 ~ 50Hz	
Current (Maximum)	<8A @ 100-240Vac @full load	
Power Supply	Hot Swappable 80 PLUS Platinum 550W Redundant Power Supply	
Temperature	5° ~ 40°C (-40° ~ 60°C non-operational)	
Dimensions (H x W x D)	131 x 482 x 545 mm / 5.16" x 18.98" x 21.46"	175 x 482 x 545 mm / 6.89" x 18.98" x 21.46"
Weight	W/o HDD ~20.50kg (~ 45.20 lbs) W/ HDD: ~32.50kg (~ 71.50 lbs)	W/o HDD ~24.50kg (~ 54.00 lbs) W/ HDD: ~42.00kg (~ 92.50 lbs)

#### Warranty and Support

Warranty	3-years standard warranty, optional extended warranty, and on-site parts replacement program (PROMISE ServicePlus) available.
Support	24/7 PROMISE eSupport Portal (support.promise.com), optional 24/7 phone and email support available.

<sup>1</sup>The Camera range is suggested value, tested in PROMISE lab under specific test scenario. For specific requirement, please consult with PROMISE sales representative.

<sup>2</sup>Please consult PROMISE support for power consumption calculation, specific to your selected GPU.

\*The final spec may vary without advance notice. Please check PROMISE website for the updated information.

\*The terms HDMI, HDMI High-Definition Multimedia Interface, HDMI Trade dress and the HDMI Logos are trademarks or registered trademarks of HDMI Licensing Administrator, Inc.



Vess A6600 equivalent to VES0603 / Vess A6800 equivalent to VES0604

Contact us



©2022 PROMISE Technology, Inc. All Rights Reserved. PROMISE, the PROMISE logo, VTrak, SmartStor, SuperTrak, FastTrak, VessRAID, Vess, PerfectPATH, PerfectRAID, SATA150, ULTRA133, VTrak S3000, BackTrak, HyperCache, HyperCache-R, HyperCache-W, DeltaScan, GreenRAID, Pegasus and SANLink are registered or pending trademarks of PROMISE Technology, Inc. in the U.S. and other countries. All other trademarks are the property of their respective owners. Information regarding products, services, and offerings may be superseded by subsequent documents and are subject to change without notice.  
P/N: G6130J596000xx  
www.promise.com