

## Product Highlights

### Power over Ethernet plus 10G/25G

#### 720XPM-48TH-6SY

- 48 x 10M-1GbE RJ45 @ 90W
- Uplinks: 4x 25G, 2 x10G
- MACsec (256-bit) support with downlink and uplink ports

#### 720XDM-48T-6SY

- 48 x 10M-1GbE RJ45 (non-PoE)
- Uplinks: 4x 25G, 2 x10G
- MACsec (256-bit) support with downlink and uplink ports

#### 720XDM-32S-6SY

- 32 x 1G SFP (non-PoE)
- Uplinks: 4x 25G, 2 x10G
- MACsec (256-bit) support with downlink and uplink ports

### MACsec 256bit

- AES static and dynamic MACsec
- 802.1x encryption

### Segmentation and Overlay

- 802.1Q VLANs
- IPv4/v6 VRFs
- VXLAN
- EVPN L2/3 (type 2/5)

### Traffic and Flow Monitoring

- Hardware accelerated monitoring
- sFlow and IPFIX
- FlowTracker to inventory devices and monitor conversations

### Cognitive Campus Resilience

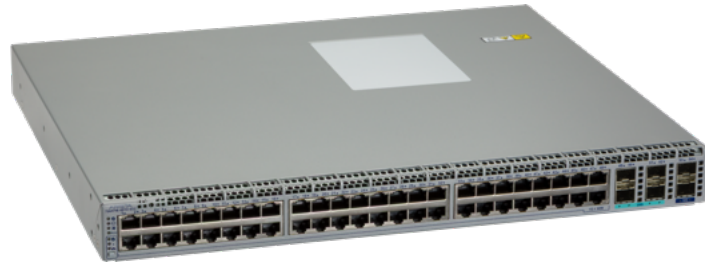
- N+1 redundant power/cooling
- Active/Active MLAG aggregation
- Dynamic uplink load balancing
- SSU for software upgrades

### Arista Extensible Operating System (EOS®)

- Single binary image
- Fine-grained truly modular network OS
- Stateful Fault Containment (SFC)
- Stateful Fault Repair (SFR)
- Full access to Linux shell and tools
- Extensible platform - bash, python, C++ , GO, OpenConfig

## Overview

Designed for the demands of the interconnected IoT enabled campus, the CCS-720XPM/XDM series delivers wirespeed connectivity for all campus user workloads under the management and monitoring of Arista cognitive campus services. The Arista Cognitive Campus CCS-720XPM/XDM series switches can support MACsec on all ports. The CCS-720XPM offers a variety of connection options for user desktops, PoE appliances and IoT devices. Managed 802.3af/at/bt power services deliver up to 90W per RJ45 port and speeds ranging from 10Mbps to 1Gbps. A choice of 25G and 10G uplinks enable 100Mbps to 25Gbps deliver network design flexibility and scalability.



*Arista 720XPM Series PoE and non-PoE Switches*

Arista's common binary EOS provides a comprehensive, standards based, layer 2 and 3 feature set that includes EVPN virtualization and QoS services. EOS supports standards based 802.1X access control, and LLDP device identification services to automate admission and segmentation of users, appliances, plus all mission critical voice, video and general purpose applications in the campus. Together, Arista's family of switching and WiFi platforms are managed through a single Cognitive Campus management plane in CloudVision, providing sub-second real time telemetry, database archival and automated analytics to manage and monitor the infrastructure, users and applications in the Campus-Cloud Network.

## Cognitive Campus

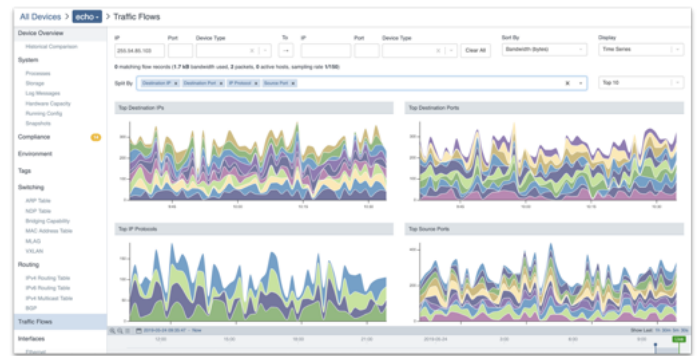
The Cognitive Management Plane (CMP) in Arista's EOS provides rich control and telemetry APIs used to simplify and automate the deployment, and maintenance of campus infrastructure while also providing real-time monitoring of campus users, applications and devices. As with all Arista platforms, EOS supports auto provisioning by way of Arista Zero Touch Provisioning (ZTP) to simplify device administration through CloudVision, or popular DevOps toolsets. In addition to legacy polling management, EOS CMP delivers real time telemetry to administrators using open gRPC/gNMI APIs used in OpenConfig, allowing administrators to create custom management tools.

## Arista EOS

The Arista 720XPM/XDM series runs the same Arista EOS software as all Arista products, simplifying network administration. Arista EOS is a modular switch operating system with a unique state sharing architecture that cleanly separates switch state from protocol processing and application logic. Built on top of a standard Linux kernel, all EOS processes run in their own protected memory space and exchange state through an in-memory database. This multi-process state sharing architecture provides the foundation for in-service-software updates and self-healing resiliency.

With Arista EOS, advanced monitoring and automation capabilities such as Zero Touch Provisioning, VMTracer and Linux based tools can be run natively on the

Driving the campus CMP (Cloud Management Plane) in the CCS-720 is the FlowTracker hardware telemetry feature (IPFIX), native in the CCS-720 series non-blocking switching processor. FlowTracker delivers real time updates for all device state, performance statistics, and application flows, without burdening other system functions. Over a thousand unique flows can be concurrently tracked per switch, with hardware support to scale to 32K flows. Device fingerprinting features are also supported, allowing the 720XPM/XDM to identify connected device type, operating system and user id, helping facilitate security audits and workgroup/workload segmentation.

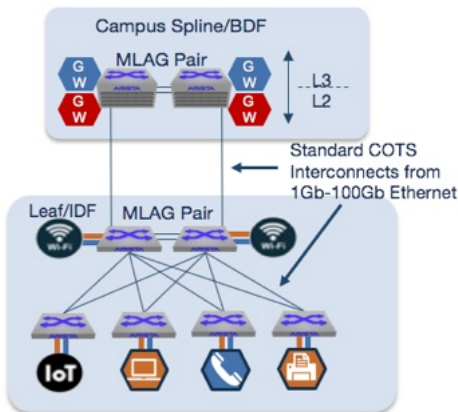
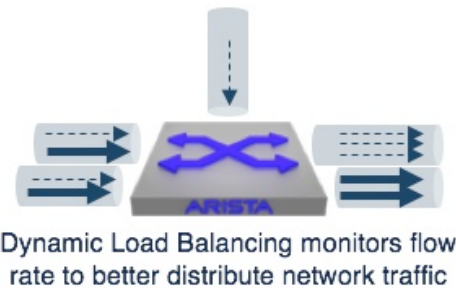


CloudVision Dashboard

With the rich telemetry of the CCS-720, Arista's CloudVision tracks application, user and device activity, measuring throughput and latency of key applications, user and device flows. CloudVision Device Analyzer (pictured above) baselines real time traffic to help alert administrators of performance or security outliers.

### Customizable Topologies for Optimized Performance

As with all Arista devices, the CCS-720 switches support open, standards based, L2 MLAG and L3 ECMP load balancing features. Administrators can employ either scheme to deliver high availability load sharing at the core building, or intermediate distribution frame. The CCS-720's Dynamic Load Balancing (DLB) feature improves on typical load sharing by dynamically tracking flow volumes and rebalancing them across shared links to optimize network utilization. DLB interoperates with other networking platforms, helping administrators improve the performance of their installed campus infrastructure.



The 720XPM/XDM uses standard RJ45, SFP, SFP+ and SFP28 interfaces for in closet and uplink interconnections, giving administrators the freedom to choose the right media type and speed that suits campus use cases and their budget. In addition to the variety of SFP, SFP28 and SFP+ copper and fiber modules that support speeds from 1Gb-25Gb are the 10G/25G multi-rate SFP optical modules. These optics allow administrators to invest in 25Gb but still run in 10Gb mode while connected to legacy infrastructure, thus simplifying campus migrations and reduce CapEx.

### Cognitive Segmentation

The CCS-720 series supports industry standard 802.1X and RADIUS authentication schemes, and interoperates with leading authentication solutions. Authorized users and devices can be automatically segmented into assigned 802.1Q or EVPN VXLAN segmented networks, facilitating infrastructure and data security. Wire-speed layer 3 VRF segmentation is also supported, giving administrators additional flexibility for supporting the most sophisticated campus use cases. The CCS-720 switches also help administrators with WiFi segmentation by providing hardware based VXLAN de-encapsulation of tunneled WiFi traffic.

### CloudVision

CloudVision is Arista's management plane solution for simplifying network operations. Built on a modern state-streaming architecture, CloudVision is a multi-function software platform that enables a suite of capabilities for automated provisioning, change control, continuous compliance, real-time telemetry, predictive analytics and 3rd party management plane orchestration. As a multi-domain solution, CloudVision is a single management platform across data center, campus, WiFi, multi-cloud, and routing interconnect use-cases. The same CloudVision software is offered as an on-prem appliance (virtual or physical) as well as CloudVision as-a-Service, which is a Arista-managed SaaS solution.

## Integrated MACsec Encryption

The CCS-720 Series supports encryption on all ports for dataplane security using industry standard MACsec encryption that avoids common threats including snooping in a zero trust environment. Every access port and uplink port supports 256 bit MACsec encryption, to secure communications between MACsec capable devices including Arista's MACsec capable WiFi access points and to the network campus core. MACsec is a separately licensed feature for each switch.

## Cognitive PoE for Mission Critical Services

Power efficiency, flexible options, power prioritization and constant PoE allow the CCS-720 series switches to support critical campus services like video security and emergency communications. 802.3af, at and bt power options deliver from 15-90W to RJ45 ports. The CCS-720 platinum rated power supplies, coupled with its low nominal consumption leaves an ample power budget for connected appliances and IoT devices. A choice of 1050W or 2000W single or redundant AC power supply options allow administrators to customize power allocation and redundancy to meet their use cases and budget.

## Dynamic Power Management

Arista leverages state of the art switching and power management technology that not only delivers enhanced power delivery options supporting the latest standards, but does so more efficiently and reliably than standard PoE delivery, so administrators can support more devices cost effectively. Dynamic PoE management enhances power budgeting and allocation features to help economize power allocation to powered devices (PD) connected to each switch dynamically allocating PoE power based on priority settings. Load sharing Power Supplies allow customers to share a common PoE bank between the power supplies within a switch, optimizing unused power bank typically allocated for the board to power more PoE devices. Persistent PoE provides power to the powered device (PD) connected to a PoE port even when the Power Sourcing Equipment (PSE) is rebooting. With cognitive campus monitoring, power configuration and utilization are tracked in real time and archived, so administrators can accurately monitor and report service levels and infrastructure power demands

## Arista Optics and Cables

The Arista 720XPM/XDM series supports a wide range of 100M, 1G, 10G and 25G pluggable optics and cables. For details about the different optical modules and the minimum EOS Software release required for each of the supported optical modules, visit <https://www.arista.com/en/products/transceivers-cables>

## EOS Licensing

Arista 720XPM/XDM Series with EOS and CloudVision, are designed to provide flexibility both in the choice of the appropriate feature functionality and in the software consumption model. The base feature set of Arista EOS comes bundled with the Arista products and systems. A set of feature licenses are available to enable additional functionality in advanced feature sets. The traditional licensing procurement model employs a perpetual term for the right to use the feature, set at a fixed price. For Arista CloudVision the functionality is available as a monthly subscription, for an agreed upon term.

### **Routing:**

General Routing functionality (BGP, OSPF, Multicast, etc) is available in the EOS Enhanced (E) license. The EOS Flex-route (FLX) Lite license expands that to include key features like BGP-EVPN for VXLAN.

### **Automation/Visibility:**

CloudVision is the most complete offering for advanced automation and visibility. Arista also offers subsets of CloudVision Lite, for entry-level GUI functionality. CloudVision is offered as an on-premises appliance (virtual or physical appliance) or as a SaaS-based software application that is fully managed by Arista.

The EOS V2 license includes capability to run custom extensions natively or via containers in EOS. In addition, the V2 license gives customers an option of integrating with Arista's best of breed ecosystem for security, analytics, visibility, and other use-cases.

## Campus Overlay Scale

The CCS-720 series switches utilizes data center class virtualization features to provide hundreds of segmented networks to thousands of users and devices. In addition to 802.1Q VLANs, the CCS-720 delivers support for VXLAN overlay networks with CVX and EVPN control plane support. The combination of virtualization scale plus the layer 2 and 3 hardware scale of the CCS-720 series ensures administrators can implement large segmented and secure campus networks with the ability to scale in the future.

## System Overview

### Arista 720XPM-48TH-6SY

Provides:

- 48x 10M - 1GbE RJ45 @ 90W
- Uplinks: 4x 25G, 2x 10G
- 336 Gbps (2-way) switching bandwidth
- MACsec performance of 50Gbps downlinks, 50Gbps uplinks



*CCS-720XPM-48TH front*

### Arista 720XDM-48T-6SY

Provides:

- 48x 10M - 1GbE (non-PoE)
- Uplinks: 4x 25G, 2x 10G
- 336 Gbps (2-way) switching bandwidth
- MACsec performance of 50Gbps downlinks, 50Gbps uplinks



*CCS-720XDM-48T front*

### Arista 720XDM-32S-6SY

Provides:

- 32x 1GbE SFP (non-PoE)
- Uplinks: 4x 25G, 2x 10G
- 304 Gbps (2-way) switching bandwidth
- MACsec performance of 50Gbps downlinks, 50Gbps uplinks

## Power supplies and Fans

Campus CCS-720XPM and CCS-720XDM series switches support 1+1 redundant power supplies. Switches can work with a single power supply by default, and a second power supply can be purchased initially or added at a later time to increase total power capacity and redundancy. If only one power supply is installed, it should always be in power supply bay #1. The switches also ship with two hot-swap field-replaceable fans.



*CCS-720XPM Rear (front to rear airflow)*

Power Supply Models	720XPM-48TH-6SY	720XDM-48T-6SY	720XDM-32S-6SY
Power Supplies Supported	1050W 2000W	300W	300W
Default Power Supply	1050W	300W	300W
System Power	70W (MAX)	70W (MAX)	70W (MAX)
PoE Power			
Single 1050W AC PS <sup>1</sup>	980W	N/A	N/A
Single 2000W AC PS <sup>1</sup>	1930W	N/A	N/A
Dual 1050W AC PS <sup>1</sup>	2030W	N/A	N/A
Dual 2000W AC PS <sup>1</sup>	3930W	N/A	N/A

1. Net of system power

## Layer 2 Features

- 802.1w Rapid Spanning Tree
- 802.1s Multiple Spanning Tree Protocol
- Rapid Per VLAN Spanning Tree (RPVST+)
- 4096 VLAN IDs, 1024 active VLANs
- Q-in-Q
- 802.3ad Link Aggregation/LACP
- MLAG (Multi-Chassis Link Aggregation)
  - Uses IEEE 802.3ad LACP
- 802.1Q VLANs/Trunking
- 802.1AB Link Layer Discovery Protocol
- 802.3x Flow Control On Uplinks
- Jumbo Frames (9216 Bytes)
- IGMP v1/v2/v3 snooping
- Storm Control

## Layer 3 Features

- Routing Protocols: OSPF, OSPFv3, BGP, MP-BGP, IS-IS, and RIPv2
- 64-way Equal Cost Multi-path Routing (ECMP)
- Resilient ECMP Routes
- VRF
- Bi-Directional Forwarding Detection (BFD)
- Route Maps
- IGMP v2/v3
- PIM-SM / PIM-SSM / PIM-BiDiR
- Anycast RP (RFC 4610)
- VRRP
- Virtual ARP (VARP)
- Policy Based Routing (PBR)
- Unicast Reverse Path Forwarding (uRPF)
- GRE Tunnels

## Advanced Monitoring and Provisioning

- Latency Analyzer and Microburst Detection (LANZ)
- Configurable Congestion Notification (CLI, Syslog)
- Streaming Events (GPB Encoded)
- Capture/Mirror of congested traffic
- Zero Touch Provisioning (ZTP)
- Integrated packet capture/analysis with TCPDump
- Advanced Mirroring - Port Mirroring (4 sessions)
  - Enhanced Remote Port Mirroring
  - Mirror to CPU
  - L2/3/4 Filtering on Mirror Sessions
- Advanced Event Management suite (AEM)
  - CLI Scheduler
  - Event Manager
  - Event Monitor
  - Linux tools
- FlowTracker features
- RFC 3176 sFlow
- IPFIX support
- Restore & configure from USB
- Software Defined Networking (SDN)
  - Arista DirectFlow
  - eAPI
  - OpenStack Neutron Support
- IEEE 1588 PTP (Transparent Clock and Boundary Clock)\*

## Virtualization Support

- VXLAN Routing and Bridging
- VXLAN Tunnel Virtual Port Termination: 1K
- EOS CVX control plane
- EVPN type 2 and type 5

## Security Features

- 256bit MACsec
- MSS-G
- MSS (multi-domain)
- Service ACLs
- Control Plane Protection (CPP)
- Ingress / Egress ACLs using L2, L3, L4 fields
- Ingress / Egress ACL Logging and Counters
- MAC ACLs
- 802.1X Enhancements
  - Multi-Host 802.1X AUTH
  - MAC-Based AUTH (MAB)
  - Dynamic VLAN assignment
  - Named VLAN support
- ACL Deny Logging
- ACL Counters
- Atomic ACL Hitless restart
- DHCP Relay
- MAC access list security
- TACACS+
- RADIUS
- RadSec
- NDR switch sensor
- ARP trapping and rate limiting

## Quality of Service (QoS) Features

- Up to 8 queues per port
- 802.1p based classification
- DSCP based classification and remarking
- Explicit Congestion Notification (ECN)
- QoS interface trust (COS / DSCP)
- Strict priority queueing
- Weighted Round Robin (WRR) Scheduling
- ACL based DSCP Marking
- ACL based Policing
- Policing/Shaping
- Rate limiting

## PoE Capabilities

- LLDP enhancements for PoE including Media Endpoint Discovery (MED) attributes reporting
- PoE Controls
- VLAN for VoIP, QoS

## Network Management

- CloudVision
- Configuration session commit and rollback
- Smart System Upgrade (SSU)
- 100/1000 Management Port

\* Not currently supported in EOS

- RS-232 Serial Console Port
- USB Port
- SNMP v1, v2, v3
- Management over IPv6
- Telnet and SSHv2
- Syslog
- AAA
- Industry Standard CLI
- Beacon LED for system identification
- System Logging
- Environment monitoring
- Maintenance mode

## Extensibility

- Linux Tools
  - Bash shell access and scripting
  - RPM support
  - Custom kernel modules
- Programmatic access to system state
  - Python
  - C++
  - Go
- Native KVM/QEMU support

## Standard Compliance

- 802.1D Bridging and Spanning Tree
- 802.1p QOS/COS
- 802.1Q VLAN Tagging
- 802.1w Rapid Spanning Tree
- 802.1s Multiple Spanning Tree Protocol
- 802.1AB Link Layer Discovery Protocol
- 802.3ad Link Aggregation with LACP
- 802.3az Energy Efficient Ethernet (EEE)\*
- 802.3x Flow Control
- 802.3u 100BASE-TX
- 802.3ab 1000BASE-T
- 802.3z 1000BASE-X
- 802.3bz 2.5/5GBASE-T
- 802.3ae 10 Gigabit Ethernet
- 802.3by 25 Gigabit Ethernet
- 802.3af/at 15W/30W Power over Ethernet (PoE)
- 802.3bt 90W Power over Ethernet (PoE)
- RFC 2460 Internet Protocol, Version 6 (IPv6) Specification
- RFC 2461 Neighbor Discovery for IP Version 6 (IPv6)
- RFC 2462 IPv6 Stateless Address Auto-configuration
- RFC 2463 Internet Control Message Protocol (ICMPv6) for the Internet Protocol Version 6 (IPv6) Specification
- IEEE 1588-2008 Precision Time Protocol
- 802.1AE: MAC Security (MACsec)

## SNMP

- RFC 3635 EtherLike-MIB
- RFC 3418 SNMPv2-MIB
- RFC 2863 IF-MIB
- RFC 2864 IF-INVERTED-STACK-MIB
- RFC 2096 IP-FORWARD-MIB

- RFC 4363 Q-BRIDGE-MIB
- RFC 4188 BRIDGE-MIB
- RFC 2013 UDP-MIB
- RFC 2012 TCP-MIB
- RFC 2011 IP-MIB
- RFC 2790 HOST-RESOURCES-MIB
- RFC 3636 MAU-MIB
- RMON-MIB
- RMON2-MIB
- HC-RMON-MIB
- LLDP-MIB
- LLDP-EXT-DOT1-MIB
- LLDP-EXT-DOT3-MIB
- ENTITY-MIB
- ENTITY-SENSOR-MIB
- ENTITY-STATE-MIB
- ARISTA-ACL-MIB
- ARISTA-QUEUE-MIB
- RFC 4273 BGP4-MIB
- RFC 4750 OSPF-MIB
- ARISTA-CONFIG-MAN-MIB
- ARISTA-REDUNDANCY-MIB
- RFC 2787 VRRPv2MIB
- MSDP-MIB
- PIM-MIB
- IGMP-MIB
- IPMROUTE-STD-MIB
- SNMP Authentication Failure trap
- ENTITY-SENSOR-MIB support for DOM (Digital Optical Monitoring)
- User configurable custom OIDs

## Table Sizes

Ingress / Egress Security ACL	2K / 1K
MAC addresses	64K
IPv4/v6 Hosts	32K / 16K
IPv4/v6 Routes	16K / 6K
ECMP	64-way
STP Instances	64 (MST)/254 (RPVST+)
IGMP Groups	up to 4K

\* Not currently supported in EOS. For details about different features supported on EOS releases, visit <https://www.arista.com/en/support/product-documentation/supported-features>

## Specifications

Feature/Model	720XPM-48TH-6SY	720XDM-48T-6SY	720XDM-32S-6SY
Ports	48x 1G RJ45 PoE 2x 10G SFP 4x 25G SFP	48x 1G RJ45 (non-PoE) 2x 10G SFP 4x 25G SFP	32x 1G SFP (non-PoE) 2x 10G SFP 4x 25G SFP
10M-1G UTP (90W) <sup>1</sup>	48	N/A	N/A
10M-1G UTP (data only)	N/A	48	N/A
1G SFP	N/A	N/A	32
Max 10G ports	6	6	6
Max 25G ports	4	4	4
Throughput (2 way)	336Gbps (MACsec: 50Gbps up, 50Gbps down)	336Gbps (MACsec: 50Gbps up, 50Gbps down)	304Gbps (MACsec: 50Gbps up, 50Gbps down)
Packets/Second (2 way)	500 Mpps	500 Mpps	500 Mpps
Latency (RJ-45)	1.2 microseconds	1.2 microseconds	1.2 microseconds
CPU	Dual Core-x86	Dual Core-x86	Dual Core-x86
System Memory	8GB	8GB	8GB
System Flash	64GB	64GB	64GB
Packet Buffer	4MB	4MB	4MB
USB Ports	1	1	1
Console Ports	1	1	1
100M/1G Management port	1	1	1
Airflow	Front-Rear	Front-Rear, Rear-Front	Front-Rear
Power Typical/Max (excluding PoE) <sup>2</sup>	57W/70W	57W/70W	57W/70W
Size (WxHxD)	1U 17.32" x 1.71" x 15.25" (44 x 4.35 x 38.73cm)	1U 17.32" x 1.71" x 15.25" (44 x 4.35 x 38.73cm)	1U 17.32" x 1.71" x 15.25" (44 x 4.35 x 38.73cm)
Weight	16.7 lbs (7.58 kg)	TBD	TBD
Fans: 2 (N+1 redundant)	FAN-7001S-RED	FAN-7001S-RED FAN-7001S-BLUE	FAN-7001S-RED
Maximum Power Supply	2	2	2
EOS License Group (LIC-FIX)	G2	G2	G2
CloudVision License Group	G2	G2	G2
Minimum EOS	4.34.2F	TBD	TBD

1: 802.3bt

2: Nominal: 20% traffic @24C max:100% @46C

## Arista Optics and Cables

The Arista CCS-720 Series supports a wide range of 1G, 10G and 25G pluggable optics and cables in the SFP ports. For details about the different optical modules and the minimum EOS Software release required for each of the supported optical modules, visit <https://www.arista.com/en/products/transceivers-cables>

Multi-rate 10G/25G optics with extended reach for existing cable installations facilitate the easy migration from 10G to 25G with no changes to existing fiber cable plant.

### Supported Optics and Cables

10G/1G/100Mb		10G/1G/100Mb		25G		25G	
10GBASE-CR		SFP+ to SFP+: 0.5m-5m		25GBASE-CR		QSFP to SFP+: 1m-5m lengths	
10GBASE-AOC		SFP+ to SFP+: 3m-30m		25GBASE-AOC		SFP+ to SFP+: 3m-30m	
10GBASE-T		100m		25G-MR-XSR (10/25G Multirate)		up to 200M/300M over OM3/OM4	
10GBASE-SRL		100m		25GBASE-SR		70m	
10GBASE-SR		300m		25G-MR-LR (10/25G Multirate)		10km	
10GBASE-LRL		1km		25GBASE-LR		10km	
10GBASE-LR		10km					
10GBASE-ER		40km					
10GBASE-ZR		80km					
10GBASE-DWDM		80km					
1GbE SX		Yes					
1GbE LX		Yes					
1GbE TX		Yes					
100Mb FX		Yes					

### Power Supply Specifications

Power Supply	PWR-322-AC-RED PWR-322-AC-BLUE	PWR-322-DC-RED PWR-322-DC-BLUE	PWR-1022-AC-RED	PWR-2022-AC-RED
Output Power	300W	300W	1050W	2000W
Input Voltage	100-240AC	40-72Vdc	100-240AC	200-240 AC
Input Current	3.35A, 100V 1.35A, 200V	6.85A, 40Vdc 5.44A, 60Vdc	12A, 100V 5A, 200V	11A, 200-240V 10A, 220-240V
Input Frequency	50-60Hz	N/A	50-60Hz	50-60Hz
Input Connector	IEC-320-C16	Terminal Block (screw) DINKLE DT-4C-B14W-7036-02	IEC-320-C16	IEC-320-C19
Efficiency	80+ Platinum	94% @50% load 91% @100% load	80+ Platinum	80+ Platinum

### Environmental Characteristics

Operating Temperature <sup>1</sup>	0 to 40C (32 to 104F)
Storage Temperature	-40 to 70C (-40 to 158F)
Relative Humidity	5 to 90%
Operating Altitude	0 to 10,000 ft, (0-3,000m)
Measured sound (ISO 7779) declared (ISO 9296) at 50% & 100% power	Lwa (dB) 57.59/68.17 (1RU)

### Standards Compliance

<b>EMC</b>	FCC A ICES-003 Issue 7 EN 55032:2015 EN IEC 61000-3-2:2019 EN 61000-3-3 KS C 9832 VCCI-CISPR 32:2016 AS/NZS CISPR 32:2015 +A1 2020 EN 300 386 TEC/SD/DD/EMC-221 CNS 15936 BS EN 55032:2015+A11:2020 BS EN IEC 61000-3-2 BS EN 61000-3-3
	<b>Immunity</b> EN 55035:2017+A11:2020 EN 300 386 KS C9835 BS EN 55035:2017+A11:2020
	<b>Safety</b> EN 62368-1:2020 + A11:2020 EN 62368-1:2014 + A11:2017 IEC-62368-1:2018 Korea KC Safety KC 62368-1 (2021-08) CSA/UL 62368-1:2019 NOM 019-SCFI-1998 CNS 15598-1 AS/NZS 62368.1:2022
	<b>Certifications</b> BSMI (Taiwan) FCC Class A (United States) ICES-003 (Canada) CE (European Union) KCC (South Korea) NRTL (North America) RCM (Australia/New Zealand) UKCA (United Kingdom) VCCI (Japan) TEC (India) ANATEL (Brazil) ICASA (South Africa) NOM Equivalency (Mexico)
	<b>European Union Directives</b> 2014/35/EU Low Voltage Directive 2014/30/EU EMC Directive 2012/19/EU WEEE Directive 2011/65/EU RoHS Directive 2015/863/EU Commission Delegated Directive
	<b>Further Information</b> <a href="#">Product Certification Portal</a>

1. Certain airflow configurations or the use of higher power or reduced temperature range optics may reduce maximum operating temperature.

Product Number	Product Description
CCS-720XPM-48TH-6SY-2F	Arista 720XPM, 48x1G 90W POE, 4x25G SFP/2x10G SFP+ switch, front to rear air, 1050W AC (2)
CCS-720XPM-48TH-6SY-F	Arista 720XPM, 48x1G 90W POE, 4x25G SFP/2x10G SFP+ switch, front to rear air, 1050W AC
CCS-720XPM-48TH-6SY#	Arista 720XPM, 48x1G 90W POE, 4x25G SFP/2x10G SFP+ switch, requires PSU/fans
CCS-720XDM-48T-6SY-2F	Arista 720XDM, 48x1G, 4x 25G SFP28/2x10G SFP+ switch, front to rear air, 300W AC (2)
CCS-720XDM-48T-6SY-F	Arista 720XDM, 48x1G, 4x 25G SFP28/2x10G SFP+ switch, front to rear air, 300W AC
CCS-720XDM-48T-6SY#	Arista 720XDM, 48x1G, 4x 25G SFP28/2x10G SFP+ switch, requires PSU/fans
CCS-720XDM-32S-6SY-2F	Arista 720XDM, 32x1G SFP, 4x 25G SFP28/2x10G SFP+ switch, front to rear air, 300W AC (2)

Product Number	Product Description
LIC-FIX-G2-MACSEC	MACSEC Encryption License for Arista Fixed 1G/mG Group 2 Ethernet Switches, MACSEC capable ports
LIC-FIX-G2-E	Enhanced License for Arista Fixed 1G/mG Group 2 Ethernet Switches (OSPF, ISIS, BGP, PIM)
LIC-FIX-G2-FLX-L	FLX-Lite License for Arista Fixed 1G/mG Group 2 Ethernet Switches - Full Routing upto 32K routes, EVPN, VXLAN (includes E Features)
LIC-FIX-G2-V2	EOS Segmentation and 3rd Party Integration Services license for Arista Fixed 1G/mG Group 2 Ethernet Switches
SS-CV-G2-SWITCH-1M	CloudVision Subscription Lic for 1-Month for 1 Switch. Arista 1G/mG. Group 2 Platforms. Delivered via download only. Includes E, FLX-L
SS-CV-LT-G2-SWITCH-1M	CloudVision Lite Subscription Lic for 1-Month for 1 Switch. Arista Fixed 1G/mG Group 2 Platforms. Delivered via download only.
SS-CVS-G2-SWITCH-1M	CloudVision as-a-Service Subscription Lic for 1-Month for 1 Switch. Arista Fixed 1G/mG Group 2 Platforms. Includes E, FLX-L.
SS-CVS-LT-G2-SWITCH-1M	CloudVision Lite as-a-Service Subscription Lic for 1-Month for 1 Switch. Arista Fixed 1G/mG Group 2 Platforms.
SS-CVSC-G2-SWITCH-1M	CloudVision CUE as-a-Service Subscription Lic for 1-Month for 1 Switch. Arista Fixed 1G/mG Group 2 Platforms.

Product Number	Product Description
PWR-322-AC-RED	Arista PSU 300W v3, AC, Front to Rear
PWR-322-AC-BLUE	Arista PSU 300W v3, AC, Rear to Front
PWR-322-DC-RED	Arista PSU 300W v3, DC, Front to Rear
PWR-322-DC-BLUE	Arista PSU 300W v3, DC, Rear to Front
PWR-1022-AC-RED	Arista PSU 1050W POE v3, AC, Front to Rear
PWR-2022-AC-RED	Arista PSU 2000W POE v3, AC, Front to Rear
FAN-7001S-RED	Spare fan module for Arista 700 Series 1RU switches (front-to-rear airflow)
FAN-7001S-BLUE	Spare fan module for Arista 700 Series 1RU switches (rear-to-front airflow)
CCS-720XPM-PCVR	Spare Blank Cover for 720XPM Series Power Supply Slot
KIT-720XPM	Spare accessory kit for Arista 720XPM 1RU Series switches. 2-post mount (Power cords available separately)
KIT-7010-4POST	Spare 4-post rack mount kit for 7010T, 720 and 722 switches
KIT-7010-2POST-23	Spare 2-post 23" rack mount kit for 7010T, 720 and 722 switches
CAB-C15-AUS	Power Cord, Australia, C15 to AS/NZS 3112, 8 Feet (2.5m)
CAB-C14-C15	Power Cord C15 to C14 (2m)
CAB-C15-EUR	Power Cord, Europe, C15 to CEE 7/7, 8 Feet (2.5m)
CAB-C15-IT	Power Cord, Italy, C15 to CEI 23-16, 8 Feet (2.5m)
CAB-C15-UK	Power Cord, United Kingdom, C15 to BS 1363/A, 8 Feet (2.5m)
CAB-C15-NA	Power Cord, North America, C15 to NEMA 5-15P, 8 Feet (2.5m)
CAB-C15-JPN	Power Cord, JAPAN, C15 to NEMA5-15P, 12A/125V, 1.25mm <sup>2</sup> , 1.8M, PSE
CAB-C15-ISR	Power Cord, Israel, C15-SI32, 10A/250V, 1.00mm <sup>2</sup> , 2.5M
CAB-C15-CHN	Power Cord, China, C15-GB2099, 10A/250V, 1.00mm <sup>2</sup> , 2.5M, CCC
CAB-C15-IND	Power Cord, India, C15-IA16A3, 10A/250V, 1.00mm <sup>2</sup> , 2.5M
CAB-C15-BRZ	Power Cord, Brazil, C15-NBR14136, 10A/250V, 1.00mm <sup>2</sup> , 2.5M
CAB-C15-SWZ	Power Cord, Swiss, C15-SEV1011, 10A/250V, 1.00mm <sup>2</sup> , 2.5M
CAB-C15-ARG	Power Cord, Argentina, C15-IRAM2073, 10A/250V, 1.00mm <sup>2</sup> , 2.5M

## Warranty

The Arista CCS-720 switches come with a one-year limited hardware warranty, which covers parts, repair, or replacement with a 10 business day turnaround after the unit is received.

## Service and Support

Support services including next business day and 4-hour advance hardware replacement are available. For service depot locations, please see: <http://www.arista.com/en/service>

### Headquarters

5453 Great America Parkway  
Santa Clara, California 95054  
408-547-5500

### Support

[support@arista.com](mailto:support@arista.com)  
408-547-5502  
866-476-0000

### Sales

[sales@arista.com](mailto:sales@arista.com)  
408-547-5501  
866-497-0000