



Centralized Management for MSSPs and Distributed Enterprises

Cyberoam Central Console (CCC) is a centralized, integrated management and monitoring appliance that allows enterprises and MSSPs to manage multiple, dispersed Cyberoam UTM installations across remote or branch offices and clients respectively. The product saves them enormous time, costs and technical training requirements for a large number of deployments in remote locations by enabling pre-provisioning of UTM appliances from a central location.

Security Management

CCC simplifies security management by enabling centralized policy creation and implementation and subscription and signature updates for Cyberoam UTM appliances deployed in branch offices and client offices for all UTM features like Firewall, Intrusion Prevention System, Anti-Virus scanning, strengthening security while lowering operational complexity. CCC offers coordinated defense against zero-hour and blended threats across distributed networks.

Enterprises and MSSPs have the flexibility to customize policies for various offices and clients. It also enables template-based configuration where MSSPs can define custom policies (e.g. for education vertical) to create vertical-focused policies for their clients in minimum time. Updating of rules and policies can be centrally scheduled for individual appliances or a group of appliances.

Ease and Flexibility of Management

CCC offers quick management of distributed Cyberoam UTM appliances by allowing grouping of these appliances based on their geography, Cyberoam UTM models, firmware version, organizations (especially for MSSPs) and service subscriptions. Enhanced with Web 2.0 benefits, the Dynamic Views in CCC help in managing, searching and sorting appliances. Enterprises and MSSPs

have the flexibility to create customizable and multiple dashboards for groups of appliances that help in quick monitoring and action.

Security against misuse of Administrator Privileges

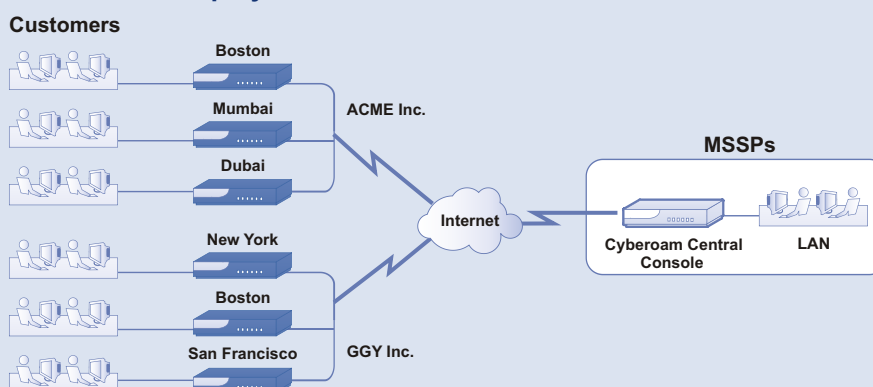
CCC enables enterprises and MSSPs to set role-based administration for the CCC appliance as well as individual Cyberoam UTM appliance and for groups of Cyberoam UTM appliances.

Logs & Alerts

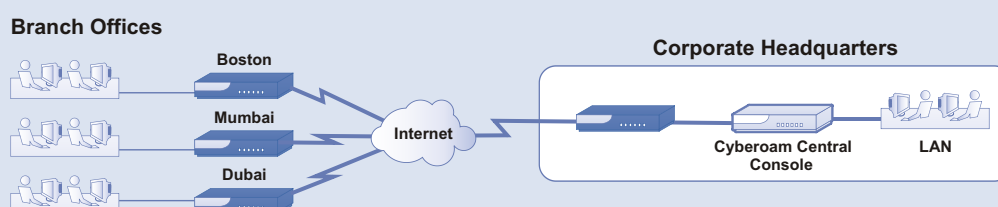
CCC's Log Viewer offers logs and views of administrator actions on the CCC as well as dispersed Cyberoam UTM appliances which helps in investigative analysis, supports regulatory compliance as well as keeps track of historical activities across distributed networks.

Administrators can set email alerts for an individual or group of Cyberoam UTM appliances across branch offices and client offices based on parameters like expiry of subscription modules, excess disk usage, IPS and virus threat counts, unhealthy surfing hits and more. Cyberoam's alert configuration facility helps avoid false alarms. Administrators can set an alert when the CPU usage reaches above 90% for a specific time period (say 20 minutes) instead of setting an alert when it momentarily peaks to 90% - which can trigger a false alarm.

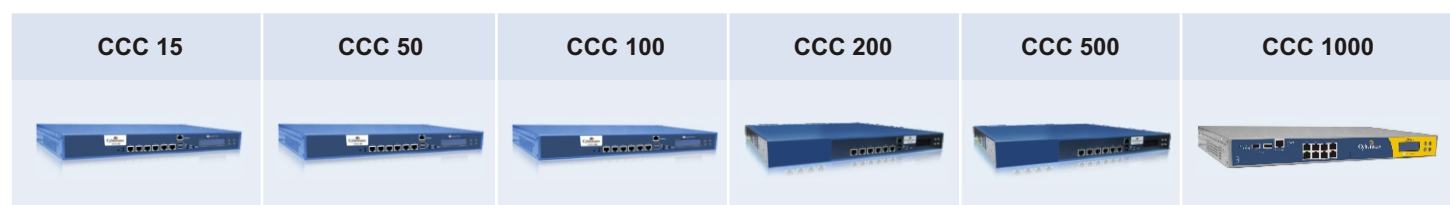
Cyberoam Central Console Deployment- MSSP



Cyberoam Central Console Deployment- Large Enterprise



Technical Specifications	CCC 15	CCC 50	CCC 100	CCC 200	CCC 500	CCC 1000
Interfaces 10/100/1000 GBE Ports Console Ports (RJ45) SFP (Mini GBIC) Ports USB Ports	6 1 - 2	6 1 - 2	6 1 - 2	6 1 - 2	6 1 - 2	8 1 - 2
Dimensions H x W x D (inches) H x W x D (cms) Weight (kg, lbs)	1.72 x 17.25 x 11.50 4.4 x 43.8 x 29.21 5.54, 12.188	1.72 x 17.25 x 11.50 4.4 x 43.8 x 29.21 5.54, 12.188	1.72 x 17.25 x 11.50 4.4 x 43.8 x 29.21 5.54, 12.188	1.72 x 17.44 x 15.98 4.4 x 44.3 x 40.6 6.04, 13.31	1.72 x 17.44 x 15.98 4.4 x 44.3 x 40.6 6.04, 13.31	1.77 x 17.25 x 18.30 4.5 x 43.8 x 46.5 13.5, 29.76
Power Input Voltage Consumption Total Heat Dissipation (BTU)	100-240VAC 128W 375	100-240VAC 128W 375	100-240VAC 128W 375	100-240VAC 185W 475	100-240VAC 185W 475	90-260VAC 129W 626
Environmental Operating Temperature Storage Temperature Relative Humidity (Non condensing) Cooling System (40mm Fan)	5 to 40 °C 0 to 70 °C 10 to 90% 3	5 to 40 °C 0 to 70 °C 10 to 90% 3	5 to 40 °C 0 to 70 °C 10 to 90% 3	5 to 40 °C 0 to 70 °C 10 to 90% 3	5 to 40 °C 0 to 70 °C 10 to 90% 3	0 to 40 °C -20 to 80 °C 10 to 90% 3
No. of CR Devices Supported	15	50	100	200	500	1000



Features List

Centralized Remote Management

Configure and Manage

- Individual Devices
- Appliance Groups

Global Enforcement

- Firewall rules and its parameters (Host, Host Group, Service, Service Group,)
- NAT policy
- DoS and Spoof Prevention Settings Schedule
- Network configuration – Static Route, DNS
- Web Filtering – Settings, Policy and Category
- Application Filtering – Category and Policy
- QoS Policy
- IPS Policy and Custom Signatures
- Anti Virus and Anti Spam – Configuration, Address Groups, Scanning rules
- Spam Digest settings
- Custom Categories – File Type
- IM – Contacts and Filtering rules
- Syslog configuration
- VPN – Policy, IPSec connection
- L2TP, PPTP – Configuration, Connection
- NTP Server
- Certificates, Certificate Authority
- User and User Groups
- Authentication configuration
- Policies - Access Time, Surfing Quota, Data Transfer
- Administrator Profiles
- Appliance Port Settings and Access
- Captive Portal settings
- Parent Proxy configuration
- SNMP

Appliance Monitoring & Alerts

- Dashboard for Appliance Group, Individual Appliance, Custom
- Views for all Appliances, Firmware-specific, Model-specific, Custom

Email Alerts for

- Subscription expired
- Change in Device connectivity status
- Device Virus threats
- Unhealthy traffic
- Surfing Pattern
- IPS attack
- Spam attack
- CPU usage
- Memory usage
- Disk usage

Centralized logging

- Audit log
- System log

Configuration Management

- Configuration Synchronization
- Centralized upgrade for
 - AV and IPS Signatures
 - Web filtering categories
- Automated and Manual Backup for Appliances
- Backup Repository of Appliances
- Restore Backup from CCC

Offline Configuration Synchronization

Upgrade Distribution

- CR Firmware
- AntiVirus and IPS Signature
- Web Filtering Categories

Administration

- Role-based Administration
- Granular Administrative controls
- Predefined and Custom Administrator profiles
- Local Administrator Accounts
- Appliance and Appliance Group Administrator Accounts

Communication

- SSL RC4 128bit Encryption
- Mutual Authentication
- HTTP, HTTPS

System Management

- Web Based User Interface
- Command Line Interface
- Web2.0 Compliant UI

Compliance

- CE
- FCC

Toll Free Numbers

USA : +1-800-686-2360 | India : 1-800-301-00013

APAC/MEA : +1-877-777-0368 | Europe : +44-808-120-3958