

Cisco Meraki for Libraries

Our cloud-managed IT solutions are built to help enable your library provide services to the community and bridge the digital divide.



Solution highlights for libraries

Create digital equity



Solution: Meraki wireless is designed for high-density and high-range open spaces with minimal maintenance.

- Handle traffic increases with a network built to scale and optimized for seamless user experiences
- Schedule availability, throttle bandwidth congestion, block unwanted web traffic, and prioritize apps

Expand services beyond library walls



Solution: Meraki can help with dependable outdoor Wi-Fi that can be deployed in a matter of minutes, then managed and monitored from anywhere.

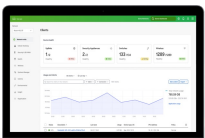
- Deploy in open-air environments with enterprise-level security and traffic and location analytics
- Pair MG cellular gateways with any router downstream to deliver primary or failover cellular support



Meet the demands of wired and wireless networks

Solution: Meraki cloud-managed switches provide the essentials for building networks that help maintain seamless network service.

- Combine secure, scalable, robust performance with an intuitive management experience that requires no additional training
- Configure from a web browser with zero-touch provisioning



Simplify adoption of the latest technologies without burdening IT resources

Solution: All Meraki devices are managed in an intuitive browser-based interface or app with quick deployment, unlimited scalability, and remote troubleshooting.

- Stay protected and up-to-date with seamless over-the-web firmware and security updates
- Isolate and fix issues in minutes with built-in remote troubleshooting tools

Extend your budget

E-Rate is a discount program that provides eligible libraries with discounts of 20%-90% on telecommunications, Internet access, and internal connections. A library's discount will match the discount of the school district nearest to them, which is based on poverty level and rurality.

All libraries will have an estimated \$5.43/square foot available, and the per-site funding "floor" was increased July 2025 to \$30,175 for public libraries and \$66,385 for tribal libraries to use between 2025-2030.

Be sure to understand the E-Rate milestones.

It's a best practice to assess your technology needs throughout the year.

E-Rate Category Two (C2) covers switches, routers, wireless, and basic firewall.

To request C2 funds, you will first need to file Form 470 (RFP) and allow responses for a minimum of 28 days. After that time, select the winning partner and you'll be ready to file Form 471 during the filing window to request E-Rate funds.

Hear from our customers

Learn how [Cape May County Library](#) was able to refresh their network with the support of E-Rate.

Learn how [Columbus Metropolitan Library](#) team keeps operations running and secure with Meraki.

[Learn more about E-Rate and Meraki](#)