

# Product data sheet

Specifications



## APC Back-UPS, 900VA/540W, Floor/Wall Mount, 120V, 8x NEMA 5-15R outlets, USB Type A + C Ports

BE900G3

### Overview

Lead time Usually in Stock

### Main

|                                  |                                     |
|----------------------------------|-------------------------------------|
| Main Input Voltage               | 120 V AC 1 phase                    |
| Input Connection Type            | NEMA 5-15P                          |
| Efficiency at full load          | 92...139 V                          |
| Input Frequency                  | 50/60 Hz +/- 3 Hz auto-sensing      |
| Output voltage                   | 120 V AC 1 phase                    |
| Rated power in W                 | 540 W                               |
| rated power in VA                | 900 VA                              |
| output connection type           | 6 NEMA 5-15R<br>2 NEMA 5-15R surge  |
| USB Charging Port                | USB type A + C                      |
| Maximum configurable power in VA | 900 VA                              |
| Max Configurable Power (Watts)   | 540 W                               |
| Transfer Time                    | 6ms typical : 10ms maximum          |
| Topology                         | Standby                             |
| Waveform Type                    | Stepped approximation to a sinewave |
| Output frequency                 | 50/60 Hz +/- 3 Hz sync to mains     |
| Replacement battery              | <a href="#">RBC17</a>               |

### Complementary

|                     |  |
|---------------------|--|
| Battery Size        | Lead-acid internal included  |
| Control panel       | LED Status display with On Line : On Battery   |
| Alarm               | Alarm when on battery : distinctive low battery alarm : overload continuous tone alarm |
| UPS connectivity    | USB port   |
| Surge energy rating | 490 J  |
| Cable length        | 5 ft (1.5 m)   |
| Number of cables    | 1  |
| color               | Black and white  |
| Height              | 3.5 in (90 mm)   |
| Width               | 6.6 in (167 mm)  |

Price is "List Price" and may be subject to a trade discount – check with your local distributor or retailer for actual price.

|                                     |                                    |
|-------------------------------------|------------------------------------|
| Depth                               | 12.5 in (318 mm)                   |
| Product Weight                      | 9.04 lb(US) (4.1 kg)               |
| Mounting preference                 | No preference                      |
| Mounting Mode                       | Not rack-mountable                 |
| Two post mountable                  | 0                                  |
| USB compatible                      | Yes                                |
| Mounting mode                       | Wall mount                         |
| Provided equipment                  | User Manual<br>USB cable           |
| Number of power module filled slots | 0                                  |
| Number of power module free slots   | 0                                  |
| Redundant                           | No                                 |
| Range of Product                    | Back-UPS                           |
| Product or Component Type           | Uninterruptible power supply (UPS) |

## Environment

|                                       |                                  |
|---------------------------------------|----------------------------------|
| Product Certifications                | cTUVus<br>ENERGY STAR V2.0 (USA) |
| Ambient Air Temperature for Operation | 32...104 °F (0...40 °C)          |
| Ambient Air Temperature for Storage   | 5...113 °F (-15...45 °C)         |
| Storage altitude                      | 0...50000 ft (0...15240 m)       |
| Relative Humidity                     | 0...95 %                         |
| Storage Relative Humidity             | 10...90 %                        |
| Acoustic level                        | 45 dBA                           |
| Online Thermal Dissipation            | 19.249 Btu/h                     |
| Operating altitude                    | 0...10000 ft                     |

## Batteries & Runtime

|                              |  |
|------------------------------|--|
| Battery Type                 | Lead-Acid battery  |
| Battery graph comments       | This graph is based on actual measured runtime data. All measurements were taken with new, fully charged batteries and a balanced resistive load (PF = 1.0). Actual runtimes may vary from the values of this graph. Actual runtimes are dependent on several variables including battery age, battery charge level, environmental conditions and characteristics of the connected load. |
| Extendable Run Time          | 0  |
| Included Battery Modules     | 0  |
| Battery Slots Empty          | 0  |
| Typical recharge time        | 8 h  |
| Battery Life                 | 2...5 year(s)  |
| Battery Charge Power (Watts) | 13 W rated   |

## Ordering and shipping details

|      |              |
|------|--------------|
| GTIN | 731304625377 |
|------|--------------|

# Packing Units

---

|                        |                      |
|------------------------|----------------------|
| Unit Type of Package 1 | PCE                  |
| Nbr. of units in pkg.  | 1                    |
| Package 1 Height       | 8.9 in (22.5 cm)     |
| Package 1 Width        | 6.06 in (15.4 cm)    |
| Package 1 Length       | 15.04 in (38.2 cm)   |
| Package weight(Lbs)    | 10.1 lb(US) (4.6 kg) |
| SCC14                  | 10731304625374       |

---

# Contractual warranty

---

|                      |                   |
|----------------------|-------------------|
| Warranty (in months) | 12 Battery 36 UPS |
|----------------------|-------------------|

---



## Environmental Data

Schneider Electric aims to achieve Net Zero status by 2050 through supply chain partnerships, lower impact materials, and circularity via our ongoing “Use Better, Use Longer, Use Again” campaign to extend product lifetimes and recyclability.

[Environmental Data explained >](#)

[How we assess product sustainability >](#)



### Environmental footprint

|  |   |
|--|---|
| Total lifecycle Carbon footprint                       | 164 kg CO2 eq.                                |
| Carbon footprint of the manufacturing phase [A1 to A3] | 44 kg CO2 eq.                                 |
| Carbon footprint of the distribution phase [A4]        | 0.5 kg CO2 eq.                                |
| Carbon footprint of the installation phase [A5]        | 0 kg CO2 eq.                                  |
| Carbon footprint of the use phase [B2, B3, B4, B6]     | 119 kg CO2 eq.                                |
| Carbon footprint of the end-of-life phase [C1 to C4]   | 0.4 kg CO2 eq.                                |
| Environmental Disclosure                               | <a href="#">Product Environmental Profile</a> |

## Use Better



### Materials and Substances

|  |  |
|--|--|
| Packaging made with recycled cardboard | No   |
| Packaging without single use plastic   | No   |
| EU RoHS Directive                      | <a href="#">Compliant By Exemption</a>   |
| REACH Regulation                       | <a href="#">Reference contains Substances of Very High Concern above the threshold</a> |



### Energy efficiency

|                             |                            |
|-----------------------------|----------------------------|
| Optimized Energy Efficiency | Energy efficient product   |
| ENERGY STAR®                | ENERGY STAR UPS V2.0 (USA) |

## Use Longer



### Lifetime extension

|        |    |
|--------|----|
| Repair | No |
|--------|----|

## Use Again



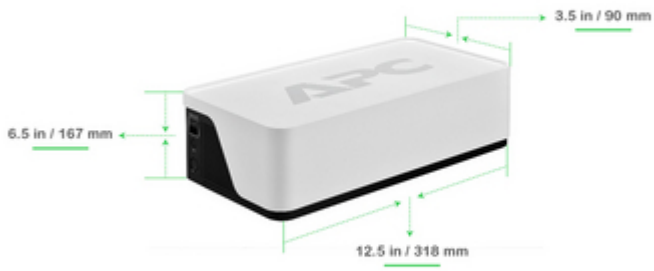
### Repack and remanufacture

|                               |   |
|-------------------------------|---|
| Recyclability potential, in % | 62                                      |
| Circularity Profile           | <a href="#">End of Life Information</a> |
| Removable battery             | User replaceable                        |
| Take-back                     | Yes                                     |

Technical Illustration

Dimensions

---



Offer Marketing Illustration

Product benefits / Features

---



Offer Marketing Illustration

Product benefits / Features

---



Offer Marketing Illustration

Product benefits / Features

---

**Runtime**



20W

Entry-Level desktop

165 mins



79W

Notebook computer

41 mins



119W

Mid-range PC

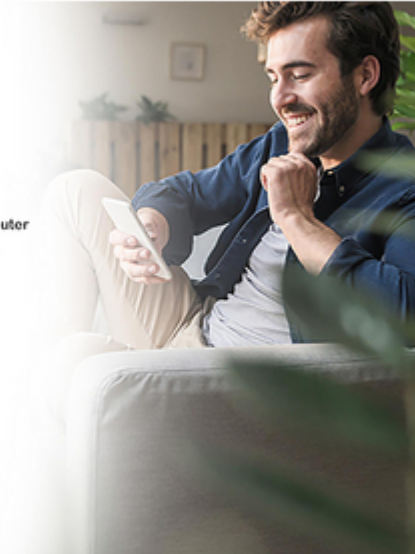
28 mins



240W

Gaming PC

11 mins




Offer Marketing Illustration

Product benefits / Features

---

**Easy-to-understand user interface for UPS status**

- UPS is operating normally
- UPS operation needs attention
- UPS is overloaded, battery must be replaced, or battery is not working



Offer Marketing Illustration

Product benefits / Features

---



Offer Marketing Illustration

Product benefits / Features

---



Offer Marketing Illustration

Product benefits / Features

---







Offer Marketing Illustration

Product benefits / Features

---

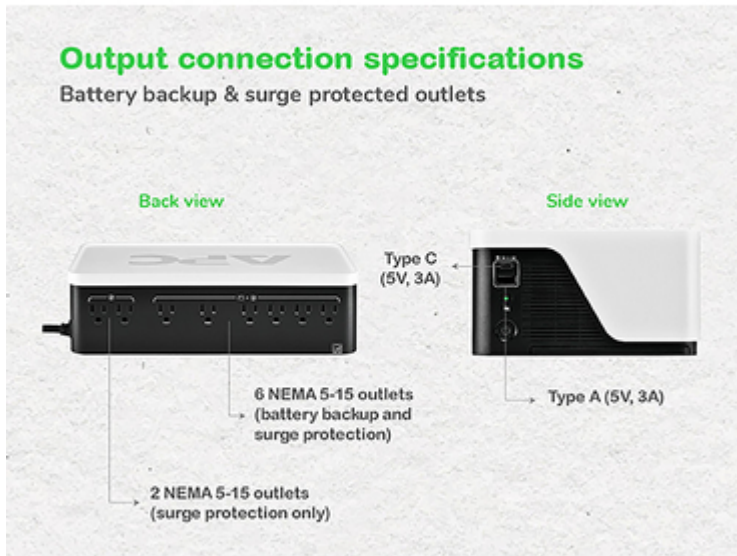
**Why use APC's Next Gen BE series?**

|   |  |   |   |
|---|--|---|---|
|  | <p>Keep your equipment powered during outages and protect them against surges, spikes, and lightning</p> |  | <p>2 USB (Type A + Type C) charging</p>                     |
|  | <p>ENERGY STAR® V2.0 (USA) certified UPS with energy monitoring and configuration options</p>            |  | <p>Over 100 mins of uninterrupted internet connectivity</p> |

Offer Marketing Illustration

Product benefits / Features

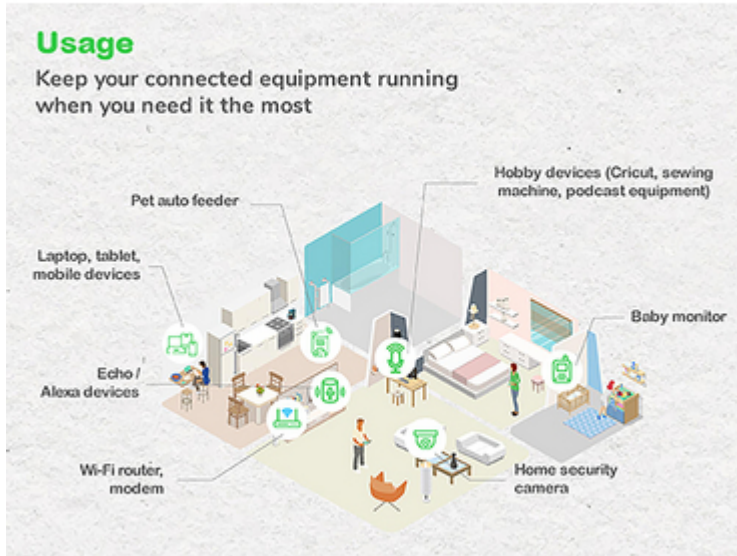
---



Offer Marketing Illustration

Product benefits / Features

---



Offer Marketing Illustration

Product benefits / Features

---



  
**Eco-friendly**

- Compact design allows you to get the most out of power protection for a lower footprint
- UPS made from lower impact materials
- Sustainable packaging
- PowerChute™ Serial Shutdown Software for energy monitoring and configuration
- User replaceable battery

Image of product / Alternate images

Alternative

---

